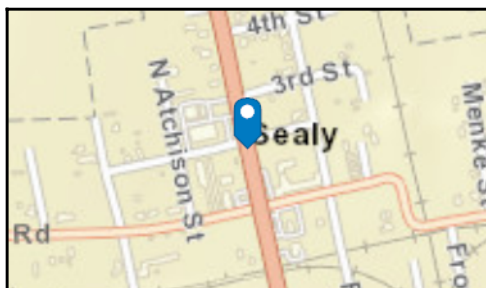
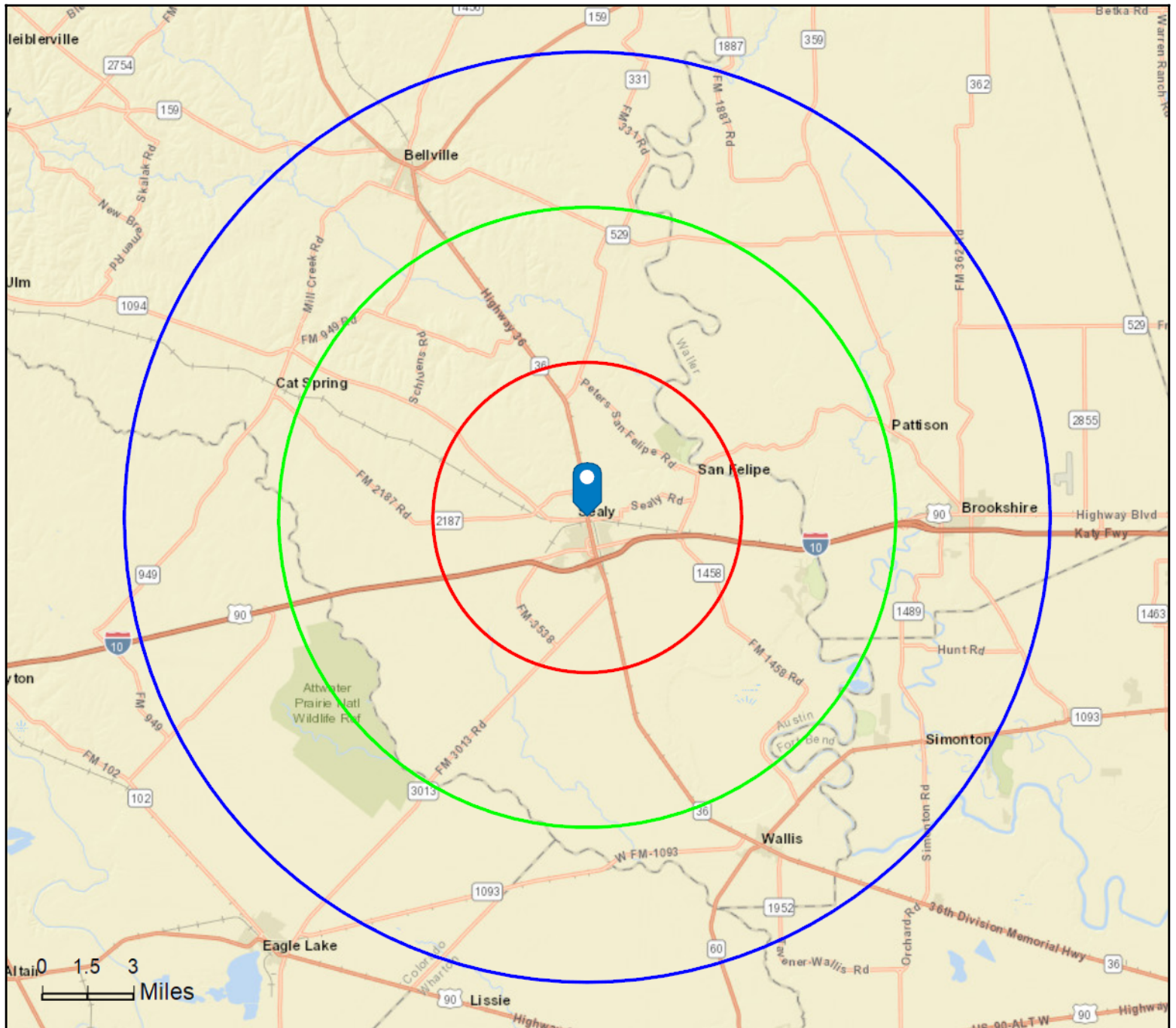


Site Map

Sealy, Texas
Rings: 5, 10, 15 mile radii

Prepared by U. McDuell
Latitude: 29.78487
Longitude: -96.15845



May 20, 2020

Market Profile

Sealy, Texas
Rings: 5, 10, 15 mile radii

Prepared by U. McDuell
Latitude: 29.78487
Longitude: -96.15845

	5 miles	10 miles	15 miles
Population Summary			
2000 Total Population	8,174	12,606	28,079
2010 Total Population	9,881	16,009	35,595
2019 Total Population	10,547	17,577	39,753
2019 Group Quarters	37	98	518
2024 Total Population	10,938	18,435	42,455
2019-2024 Annual Rate	0.73%	0.96%	1.32%
2019 Total Daytime Population	10,685	15,431	39,716
Workers	5,285	6,280	17,978
Residents	5,400	9,151	21,738
Household Summary			
2000 Households	2,914	4,513	10,078
2000 Average Household Size	2.78	2.77	2.73
2010 Households	3,504	5,748	12,867
2010 Average Household Size	2.81	2.77	2.73
2019 Households	3,711	6,278	14,248
2019 Average Household Size	2.83	2.78	2.75
2024 Households	3,843	6,580	15,184
2024 Average Household Size	2.84	2.79	2.76
2019-2024 Annual Rate	0.70%	0.94%	1.28%
2010 Families	2,608	4,278	9,411
2010 Average Family Size	3.27	3.22	3.20
2019 Families	2,747	4,641	10,325
2019 Average Family Size	3.31	3.25	3.25
2024 Families	2,839	4,852	10,983
2024 Average Family Size	3.32	3.26	3.26
2019-2024 Annual Rate	0.66%	0.89%	1.24%
Housing Unit Summary			
2000 Housing Units	3,255	5,097	11,403
Owner Occupied Housing Units	65.0%	66.8%	66.1%
Renter Occupied Housing Units	24.5%	21.7%	22.3%
Vacant Housing Units	10.5%	11.5%	11.6%
2010 Housing Units	3,969	6,583	14,802
Owner Occupied Housing Units	64.4%	65.2%	63.1%
Renter Occupied Housing Units	23.8%	22.1%	23.8%
Vacant Housing Units	11.7%	12.7%	13.1%
2019 Housing Units	4,165	7,103	16,233
Owner Occupied Housing Units	59.5%	61.3%	60.3%
Renter Occupied Housing Units	29.6%	27.1%	27.5%
Vacant Housing Units	10.9%	11.6%	12.2%
2024 Housing Units	4,325	7,457	17,269
Owner Occupied Housing Units	59.3%	61.3%	60.8%
Renter Occupied Housing Units	29.5%	27.0%	27.1%
Vacant Housing Units	11.1%	11.8%	12.1%
Median Household Income			
2019	\$66,880	\$65,691	\$58,450
2024	\$78,018	\$76,429	\$67,364
Median Home Value			
2019	\$214,092	\$218,192	\$212,560
2024	\$263,721	\$274,862	\$274,189
Per Capita Income			
2019	\$29,375	\$29,285	\$28,142
2024	\$33,635	\$33,321	\$31,895
Median Age			
2010	37.1	38.0	38.0
2019	37.7	38.7	38.5
2024	37.9	39.1	39.1

Data Note: Household population includes persons not residing in group quarters. Average Household Size is the household population divided by total households. Persons in families include the householder and persons related to the householder by birth, marriage, or adoption. Per Capita Income represents the income received by all persons aged 15 years and over divided by the total population.

Source: U.S. Census Bureau, Census 2010 Summary File 1. Esri forecasts for 2019 and 2024 Esri converted Census 2000 data into 2010 geography.

May 20, 2020

Market Profile

Sealy, Texas
Rings: 5, 10, 15 mile radii

Prepared by U. McDuell
Latitude: 29.78487
Longitude: -96.15845

	5 miles	10 miles	15 miles
2019 Households by Income			
Household Income Base	3,711	6,278	14,248
<\$15,000	10.4%	10.5%	10.7%
\$15,000 - \$24,999	8.9%	9.1%	10.4%
\$25,000 - \$34,999	9.9%	9.3%	10.3%
\$35,000 - \$49,999	9.5%	10.6%	11.9%
\$50,000 - \$74,999	15.1%	14.9%	15.7%
\$75,000 - \$99,999	12.9%	13.7%	13.3%
\$100,000 - \$149,999	23.3%	21.9%	17.5%
\$150,000 - \$199,999	5.7%	5.7%	5.3%
\$200,000+	4.2%	4.3%	4.9%
Average Household Income	\$81,764	\$81,332	\$78,897
2024 Households by Income			
Household Income Base	3,843	6,580	15,184
<\$15,000	8.6%	8.7%	8.9%
\$15,000 - \$24,999	7.7%	7.8%	8.9%
\$25,000 - \$34,999	8.7%	8.2%	9.1%
\$35,000 - \$49,999	8.6%	9.7%	11.1%
\$50,000 - \$74,999	14.4%	14.5%	15.7%
\$75,000 - \$99,999	12.9%	13.8%	13.8%
\$100,000 - \$149,999	26.4%	24.7%	20.0%
\$150,000 - \$199,999	7.3%	7.2%	6.7%
\$200,000+	5.4%	5.3%	5.7%
Average Household Income	\$93,731	\$92,608	\$89,624
2019 Owner Occupied Housing Units by Value			
Total	2,479	4,356	9,782
<\$50,000	7.4%	8.4%	9.6%
\$50,000 - \$99,999	9.8%	10.5%	11.0%
\$100,000 - \$149,999	13.4%	12.9%	12.6%
\$150,000 - \$199,999	15.8%	14.3%	14.1%
\$200,000 - \$249,999	12.7%	10.5%	10.7%
\$250,000 - \$299,999	12.2%	12.2%	10.2%
\$300,000 - \$399,999	17.5%	18.6%	15.5%
\$400,000 - \$499,999	5.4%	5.1%	7.0%
\$500,000 - \$749,999	3.3%	4.8%	5.7%
\$750,000 - \$999,999	1.7%	1.6%	1.3%
\$1,000,000 - \$1,499,999	0.9%	1.0%	2.0%
\$1,500,000 - \$1,999,999	0.0%	0.0%	0.1%
\$2,000,000 +	0.0%	0.0%	0.1%
Average Home Value	\$247,398	\$252,870	\$265,591
2024 Owner Occupied Housing Units by Value			
Total	2,565	4,568	10,498
<\$50,000	4.4%	4.8%	5.6%
\$50,000 - \$99,999	5.9%	6.1%	6.4%
\$100,000 - \$149,999	9.2%	9.1%	8.9%
\$150,000 - \$199,999	12.5%	12.9%	13.3%
\$200,000 - \$249,999	14.3%	11.3%	11.2%
\$250,000 - \$299,999	13.6%	11.9%	9.4%
\$300,000 - \$399,999	25.8%	25.7%	20.4%
\$400,000 - \$499,999	6.6%	7.2%	11.0%
\$500,000 - \$749,999	3.6%	6.9%	8.7%
\$750,000 - \$999,999	2.7%	2.5%	2.1%
\$1,000,000 - \$1,499,999	1.4%	1.7%	2.7%
\$1,500,000 - \$1,999,999	0.0%	0.0%	0.1%
\$2,000,000 +	0.0%	0.0%	0.1%
Average Home Value	\$292,827	\$306,184	\$323,814

Data Note: Income represents the preceding year, expressed in current dollars. Household income includes wage and salary earnings, interest dividends, net rents, pensions, SSI and welfare payments, child support, and alimony.

Source: U.S. Census Bureau, Census 2010 Summary File 1. Esri forecasts for 2019 and 2024 Esri converted Census 2000 data into 2010 geography.

May 20, 2020

Market Profile

Sealy, Texas
Rings: 5, 10, 15 mile radii

Prepared by U. McDuell
Latitude: 29.78487
Longitude: -96.15845

	5 miles	10 miles	15 miles
2010 Population by Age			
Total	9,881	16,009	35,593
0 - 4	7.8%	7.5%	7.6%
5 - 9	7.2%	7.1%	7.1%
10 - 14	7.6%	7.5%	7.4%
15 - 24	12.7%	12.6%	12.6%
25 - 34	12.0%	11.6%	11.7%
35 - 44	12.4%	12.5%	12.5%
45 - 54	15.1%	15.5%	15.4%
55 - 64	12.1%	12.5%	12.6%
65 - 74	7.2%	7.5%	7.4%
75 - 84	4.2%	4.1%	4.1%
85 +	1.6%	1.5%	1.6%
18 +	72.7%	73.3%	73.3%
2019 Population by Age			
Total	10,549	17,575	39,753
0 - 4	7.2%	6.8%	7.0%
5 - 9	7.4%	7.1%	7.1%
10 - 14	7.4%	7.2%	7.2%
15 - 24	11.6%	11.3%	11.4%
25 - 34	13.0%	12.9%	13.0%
35 - 44	11.9%	11.9%	11.9%
45 - 54	12.1%	12.3%	12.1%
55 - 64	13.5%	14.1%	14.0%
65 - 74	9.9%	10.3%	10.3%
75 - 84	4.4%	4.5%	4.5%
85 +	1.7%	1.6%	1.7%
18 +	74.2%	75.2%	75.1%
2024 Population by Age			
Total	10,939	18,435	42,455
0 - 4	7.2%	6.8%	7.0%
5 - 9	7.3%	7.0%	7.1%
10 - 14	7.7%	7.5%	7.4%
15 - 24	11.6%	11.3%	11.3%
25 - 34	12.3%	11.9%	12.0%
35 - 44	12.7%	12.8%	12.8%
45 - 54	11.2%	11.4%	11.4%
55 - 64	12.0%	12.6%	12.4%
65 - 74	10.9%	11.5%	11.4%
75 - 84	5.3%	5.6%	5.7%
85 +	1.6%	1.6%	1.6%
18 +	73.4%	74.5%	74.4%
2010 Population by Sex			
Males	4,910	8,005	17,763
Females	4,971	8,003	17,832
2019 Population by Sex			
Males	5,244	8,787	19,837
Females	5,303	8,790	19,916
2024 Population by Sex			
Males	5,435	9,210	21,170
Females	5,502	9,225	21,285

Source: U.S. Census Bureau, Census 2010 Summary File 1. Esri forecasts for 2019 and 2024 Esri converted Census 2000 data into 2010 geography.

May 20, 2020

Market Profile

Sealy, Texas
Rings: 5, 10, 15 mile radii

Prepared by U. McDuell
Latitude: 29.78487
Longitude: -96.15845

	5 miles	10 miles	15 miles
2010 Population by Race/Ethnicity			
Total	9,881	16,009	35,595
White Alone	75.1%	75.2%	71.3%
Black Alone	10.3%	10.0%	13.3%
American Indian Alone	0.3%	0.4%	0.6%
Asian Alone	0.6%	0.5%	0.6%
Pacific Islander Alone	0.0%	0.0%	0.0%
Some Other Race Alone	11.1%	11.2%	12.0%
Two or More Races	2.6%	2.6%	2.3%
Hispanic Origin	32.6%	31.4%	31.1%
Diversity Index	67.8	67.3	70.0
2019 Population by Race/Ethnicity			
Total	10,546	17,578	39,752
White Alone	73.0%	72.7%	68.1%
Black Alone	9.6%	9.6%	13.6%
American Indian Alone	0.3%	0.4%	0.6%
Asian Alone	0.9%	0.8%	0.8%
Pacific Islander Alone	0.0%	0.0%	0.0%
Some Other Race Alone	13.1%	13.2%	14.0%
Two or More Races	3.2%	3.2%	2.8%
Hispanic Origin	38.1%	36.7%	36.0%
Diversity Index	71.4	71.2	74.0
2024 Population by Race/Ethnicity			
Total	10,938	18,435	42,454
White Alone	71.8%	71.5%	66.8%
Black Alone	9.0%	9.2%	13.5%
American Indian Alone	0.3%	0.4%	0.6%
Asian Alone	1.1%	1.0%	1.0%
Pacific Islander Alone	0.0%	0.0%	0.0%
Some Other Race Alone	14.2%	14.3%	15.0%
Two or More Races	3.6%	3.6%	3.1%
Hispanic Origin	41.7%	40.3%	39.0%
Diversity Index	73.1	73.0	75.7
2010 Population by Relationship and Household Type			
Total	9,881	16,009	35,595
In Households	99.6%	99.4%	98.7%
In Family Households	88.7%	88.4%	87.0%
Householder	26.8%	26.9%	26.3%
Spouse	20.5%	20.9%	20.0%
Child	34.5%	33.8%	33.7%
Other relative	4.4%	4.4%	4.7%
Nonrelative	2.4%	2.4%	2.3%
In Nonfamily Households	10.9%	11.1%	11.6%
In Group Quarters	0.4%	0.6%	1.3%
Institutionalized Population	0.4%	0.4%	0.9%
Noninstitutionalized Population	0.0%	0.2%	0.4%

Data Note: Persons of Hispanic Origin may be of any race. The Diversity Index measures the probability that two people from the same area will be from different race/ethnic groups.

Source: U.S. Census Bureau, Census 2010 Summary File 1. Esri forecasts for 2019 and 2024 Esri converted Census 2000 data into 2010 geography.

May 20, 2020

Market Profile

Sealy, Texas
Rings: 5, 10, 15 mile radii

Prepared by U. McDuell
Latitude: 29.78487
Longitude: -96.15845

	5 miles	10 miles	15 miles
2019 Population 25+ by Educational Attainment			
Total	7,005	11,873	26,799
Less than 9th Grade	9.9%	9.5%	9.4%
9th - 12th Grade, No Diploma	9.6%	9.6%	9.8%
High School Graduate	26.7%	26.6%	28.2%
GED/Alternative Credential	6.1%	5.0%	3.6%
Some College, No Degree	20.1%	21.3%	21.6%
Associate Degree	10.3%	10.0%	8.0%
Bachelor's Degree	12.9%	13.7%	14.0%
Graduate/Professional Degree	4.4%	4.3%	5.3%
2019 Population 15+ by Marital Status			
Total	8,228	13,861	31,312
Never Married	25.2%	24.0%	28.0%
Married	59.4%	60.6%	56.8%
Widowed	6.4%	6.2%	6.2%
Divorced	9.1%	9.2%	8.9%
2019 Civilian Population 16+ in Labor Force			
Civilian Employed	97.7%	97.2%	95.7%
Civilian Unemployed (Unemployment Rate)	2.3%	2.8%	4.3%
2019 Employed Population 16+ by Industry			
Total	5,236	8,572	18,215
Agriculture/Mining	3.4%	3.8%	4.0%
Construction	9.3%	10.4%	10.7%
Manufacturing	12.8%	12.4%	12.6%
Wholesale Trade	1.3%	1.6%	2.1%
Retail Trade	18.7%	18.4%	16.0%
Transportation/Utilities	5.6%	5.1%	5.7%
Information	1.0%	0.9%	0.8%
Finance/Insurance/Real Estate	3.9%	3.5%	3.4%
Services	41.2%	40.2%	40.7%
Public Administration	2.8%	3.7%	3.9%
2019 Employed Population 16+ by Occupation			
Total	5,237	8,574	18,216
White Collar	49.9%	51.3%	51.5%
Management/Business/Financial	9.5%	10.6%	11.1%
Professional	15.9%	16.1%	17.0%
Sales	11.6%	10.9%	10.2%
Administrative Support	13.0%	13.7%	13.3%
Services	19.3%	17.8%	17.8%
Blue Collar	30.8%	31.0%	30.6%
Farming/Forestry/Fishing	0.4%	0.7%	0.9%
Construction/Extraction	7.9%	8.0%	8.3%
Installation/Maintenance/Repair	3.7%	4.4%	4.5%
Production	9.2%	8.9%	8.3%
Transportation/Material Moving	9.6%	8.9%	8.6%
2010 Population By Urban/ Rural Status			
Total Population	9,881	16,009	35,595
Population Inside Urbanized Area	0.0%	0.0%	1.3%
Population Inside Urbanized Cluster	49.4%	37.1%	39.7%
Rural Population	50.6%	62.9%	59.1%

Source: U.S. Census Bureau, Census 2010 Summary File 1. Esri forecasts for 2019 and 2024 Esri converted Census 2000 data into 2010 geography.

May 20, 2020

Market Profile

Sealy, Texas
Rings: 5, 10, 15 mile radii

Prepared by U. McDuell
Latitude: 29.78487
Longitude: -96.15845

	5 miles	10 miles	15 miles
2010 Households by Type			
Total	3,504	5,749	12,867
Households with 1 Person	21.5%	21.5%	22.6%
Households with 2+ People	78.5%	78.5%	77.4%
Family Households	74.4%	74.4%	73.1%
Husband-wife Families	56.8%	57.8%	55.8%
With Related Children	26.0%	26.1%	25.4%
Other Family (No Spouse Present)	17.7%	16.6%	17.3%
Other Family with Male Householder	5.7%	5.4%	5.5%
With Related Children	3.3%	3.2%	3.2%
Other Family with Female Householder	12.0%	11.1%	11.9%
With Related Children	8.2%	7.5%	8.1%
Nonfamily Households	4.0%	4.1%	4.3%
All Households with Children	37.8%	37.2%	37.1%
Multigenerational Households	5.9%	5.5%	5.3%
Unmarried Partner Households	6.4%	5.9%	5.7%
Male-female	5.8%	5.4%	5.1%
Same-sex	0.5%	0.5%	0.6%
2010 Households by Size			
Total	3,503	5,748	12,866
1 Person Household	21.6%	21.5%	22.6%
2 Person Household	33.5%	34.1%	33.5%
3 Person Household	16.5%	16.3%	15.9%
4 Person Household	14.4%	14.2%	14.0%
5 Person Household	8.3%	8.0%	7.8%
6 Person Household	3.7%	3.5%	3.6%
7 + Person Household	2.2%	2.3%	2.5%
2010 Households by Tenure and Mortgage Status			
Total	3,504	5,748	12,867
Owner Occupied	73.0%	74.6%	72.6%
Owned with a Mortgage/Loan	42.0%	42.1%	39.9%
Owned Free and Clear	31.1%	32.5%	32.7%
Renter Occupied	27.0%	25.4%	27.4%
2010 Housing Units By Urban/ Rural Status			
Total Housing Units	3,969	6,583	14,802
Housing Units Inside Urbanized Area	0.0%	0.0%	1.2%
Housing Units Inside Urbanized Cluster	48.8%	36.6%	38.1%
Rural Housing Units	51.2%	63.4%	60.7%

Data Note: Households with children include any households with people under age 18, related or not. Multigenerational households are families with 3 or more parent-child relationships. Unmarried partner households are usually classified as nonfamily households unless there is another member of the household related to the householder. Multigenerational and unmarried partner households are reported only to the tract level. Esri estimated block group data, which is used to estimate polygons or non-standard geography.

Source: U.S. Census Bureau, Census 2010 Summary File 1. Esri forecasts for 2019 and 2024 Esri converted Census 2000 data into 2010 geography.

May 20, 2020

Market Profile

Sealy, Texas
Rings: 5, 10, 15 mile radii

Prepared by U. McDuell
Latitude: 29.78487
Longitude: -96.15845

	5 miles	10 miles	15 miles
Top 3 Tapestry Segments			
1.	Middleburg (4C)	Middleburg (4C)	Southern Satellites (10A)
2.	Barrios Urbanos (7D)	Southern Satellites (10A)	Barrios Urbanos (7D)
3.	Parks and Rec (5C)	Green Acres (6A)	Middleburg (4C)
2019 Consumer Spending			
Apparel & Services: Total \$	\$7,412,833	\$12,503,849	\$27,727,965
Average Spent	\$1,997.53	\$1,991.69	\$1,946.10
Spending Potential Index	93	93	91
Education: Total \$	\$5,160,941	\$8,597,015	\$18,762,327
Average Spent	\$1,390.71	\$1,369.39	\$1,316.84
Spending Potential Index	87	86	83
Entertainment/Recreation: Total \$	\$11,569,799	\$19,666,642	\$43,646,960
Average Spent	\$3,117.70	\$3,132.63	\$3,063.37
Spending Potential Index	95	96	94
Food at Home: Total \$	\$18,330,013	\$31,179,785	\$69,536,969
Average Spent	\$4,939.37	\$4,966.52	\$4,880.47
Spending Potential Index	95	96	94
Food Away from Home: Total \$	\$12,888,687	\$21,747,249	\$48,185,660
Average Spent	\$3,473.10	\$3,464.04	\$3,381.92
Spending Potential Index	95	94	92
Health Care: Total \$	\$21,612,914	\$36,947,255	\$82,199,894
Average Spent	\$5,824.01	\$5,885.20	\$5,769.22
Spending Potential Index	98	99	97
HH Furnishings & Equipment: Total \$	\$7,624,924	\$12,800,500	\$28,293,173
Average Spent	\$2,054.68	\$2,038.95	\$1,985.76
Spending Potential Index	96	96	93
Personal Care Products & Services: Total \$	\$3,102,712	\$5,233,222	\$11,491,825
Average Spent	\$836.09	\$833.58	\$806.56
Spending Potential Index	94	94	91
Shelter: Total \$	\$62,577,840	\$102,862,969	\$224,739,681
Average Spent	\$16,862.80	\$16,384.67	\$15,773.42
Spending Potential Index	91	89	85
Support Payments/Cash Contributions/Gifts in Kind: Total \$	\$8,691,068	\$14,922,936	\$33,070,729
Average Spent	\$2,341.97	\$2,377.02	\$2,321.08
Spending Potential Index	94	96	94
Travel: Total \$	\$7,696,972	\$12,819,709	\$27,925,169
Average Spent	\$2,074.10	\$2,042.01	\$1,959.94
Spending Potential Index	92	91	87
Vehicle Maintenance & Repairs: Total \$	\$4,071,822	\$6,867,006	\$15,236,776
Average Spent	\$1,097.23	\$1,093.82	\$1,069.40
Spending Potential Index	96	96	93

Data Note: Consumer spending shows the amount spent on a variety of goods and services by households that reside in the area. Expenditures are shown by broad budget categories that are not mutually exclusive. Consumer spending does not equal business revenue. Total and Average Amount Spent Per Household represent annual figures. The Spending Potential Index represents the amount spent in the area relative to a national average of 100.

Source: Consumer Spending data are derived from the 2016 and 2017 Consumer Expenditure Surveys, Bureau of Labor Statistics. Esri.

Source: U.S. Census Bureau, Census 2010 Summary File 1. Esri forecasts for 2019 and 2024 Esri converted Census 2000 data into 2010 geography.

May 20, 2020

Demographic and Income Comparison Profile

Sealy, Texas
Rings: 5, 10, 15 mile radii

Prepared by U. McDuell
Latitude: 29.78487
Longitude: -96.15845

	5 miles	10 miles	15 miles
Census 2010 Summary			
Population	9,881	16,009	35,595
Households	3,504	5,748	12,867
Families	2,608	4,278	9,411
Average Household Size	2.81	2.77	2.73
Owner Occupied Housing Units	2,558	4,290	9,343
Renter Occupied Housing Units	946	1,458	3,524
Median Age	37.1	38.0	38.0
2019 Summary			
Population	10,547	17,577	39,753
Households	3,711	6,278	14,248
Families	2,747	4,641	10,325
Average Household Size	2.83	2.78	2.75
Owner Occupied Housing Units	2,479	4,356	9,782
Renter Occupied Housing Units	1,232	1,922	4,465
Median Age	37.7	38.7	38.5
Median Household Income	\$66,880	\$65,691	\$58,450
Average Household Income	\$81,764	\$81,332	\$78,897
2024 Summary			
Population	10,938	18,435	42,455
Households	3,843	6,580	15,184
Families	2,839	4,852	10,983
Average Household Size	2.84	2.79	2.76
Owner Occupied Housing Units	2,565	4,568	10,498
Renter Occupied Housing Units	1,278	2,012	4,686
Median Age	37.9	39.1	39.1
Median Household Income	\$78,018	\$76,429	\$67,364
Average Household Income	\$93,731	\$92,608	\$89,624
Trends: 2019-2024 Annual Rate			
Population	0.73%	0.96%	1.32%
Households	0.70%	0.94%	1.28%
Families	0.66%	0.89%	1.24%
Owner Households	0.68%	0.95%	1.42%
Median Household Income	3.13%	3.07%	2.88%

Source: U.S. Census Bureau, Census 2010 Summary File 1. Esri forecasts for 2019 and 2024.

May 20, 2020

Demographic and Income Comparison Profile

Sealy, Texas
Rings: 5, 10, 15 mile radii

Prepared by U. McDuell
Latitude: 29.78487
Longitude: -96.15845

2019 Households by Income	5 miles		10 miles		15 miles	
	Number	Percent	Number	Percent	Number	Percent
<\$15,000	386	10.4%	657	10.5%	1,529	10.7%
\$15,000 - \$24,999	331	8.9%	573	9.1%	1,484	10.4%
\$25,000 - \$34,999	367	9.9%	585	9.3%	1,465	10.3%
\$35,000 - \$49,999	352	9.5%	668	10.6%	1,700	11.9%
\$50,000 - \$74,999	562	15.1%	933	14.9%	2,232	15.7%
\$75,000 - \$99,999	480	12.9%	861	13.7%	1,892	13.3%
\$100,000 - \$149,999	865	23.3%	1,374	21.9%	2,494	17.5%
\$150,000 - \$199,999	211	5.7%	360	5.7%	760	5.3%
\$200,000+	156	4.2%	268	4.3%	692	4.9%
Median Household Income	\$66,880		\$65,691		\$58,450	
Average Household Income	\$81,764		\$81,332		\$78,897	
Per Capita Income	\$29,375		\$29,285		\$28,142	

2024 Households by Income	5 miles		10 miles		15 miles	
	Number	Percent	Number	Percent	Number	Percent
<\$15,000	332	8.6%	575	8.7%	1,355	8.9%
\$15,000 - \$24,999	294	7.7%	516	7.8%	1,346	8.9%
\$25,000 - \$34,999	333	8.7%	542	8.2%	1,384	9.1%
\$35,000 - \$49,999	331	8.6%	635	9.7%	1,684	11.1%
\$50,000 - \$74,999	555	14.4%	953	14.5%	2,390	15.7%
\$75,000 - \$99,999	495	12.9%	911	13.8%	2,092	13.8%
\$100,000 - \$149,999	1,016	26.4%	1,626	24.7%	3,040	20.0%
\$150,000 - \$199,999	280	7.3%	474	7.2%	1,024	6.7%
\$200,000+	207	5.4%	348	5.3%	870	5.7%
Median Household Income	\$78,018		\$76,429		\$67,364	
Average Household Income	\$93,731		\$92,608		\$89,624	
Per Capita Income	\$33,635		\$33,321		\$31,895	

Data Note: Income is expressed in current dollars.

Source: U.S. Census Bureau, Census 2010 Summary File 1. Esri forecasts for 2019 and 2024.

May 20, 2020

Demographic and Income Comparison Profile

Sealy, Texas
Rings: 5, 10, 15 mile radii

Prepared by U. McDuell
Latitude: 29.78487
Longitude: -96.15845

	5 miles		10 miles		15 miles	
2010 Population by Age	Number	Percent	Number	Percent	Number	Percent
Age 0 - 4	772	7.8%	1,195	7.5%	2,699	7.6%
Age 5 - 9	709	7.2%	1,136	7.1%	2,535	7.1%
Age 10 - 14	752	7.6%	1,203	7.5%	2,632	7.4%
Age 15 - 19	710	7.2%	1,143	7.1%	2,534	7.1%
Age 20 - 24	546	5.5%	873	5.5%	1,960	5.5%
Age 25 - 34	1,188	12.0%	1,861	11.6%	4,162	11.7%
Age 35 - 44	1,229	12.4%	2,008	12.5%	4,433	12.5%
Age 45 - 54	1,493	15.1%	2,486	15.5%	5,492	15.4%
Age 55 - 64	1,199	12.1%	2,007	12.5%	4,482	12.6%
Age 65 - 74	713	7.2%	1,196	7.5%	2,636	7.4%
Age 75 - 84	412	4.2%	654	4.1%	1,451	4.1%
Age 85+	159	1.6%	247	1.5%	580	1.6%

2019 Population by Age	Number	Percent	Number	Percent	Number	Percent
Age 0 - 4	755	7.2%	1,198	6.8%	2,764	7.0%
Age 5 - 9	780	7.4%	1,250	7.1%	2,829	7.1%
Age 10 - 14	784	7.4%	1,268	7.2%	2,848	7.2%
Age 15 - 19	643	6.1%	1,048	6.0%	2,375	6.0%
Age 20 - 24	581	5.5%	939	5.3%	2,138	5.4%
Age 25 - 34	1,368	13.0%	2,270	12.9%	5,167	13.0%
Age 35 - 44	1,256	11.9%	2,088	11.9%	4,731	11.9%
Age 45 - 54	1,275	12.1%	2,157	12.3%	4,808	12.1%
Age 55 - 64	1,428	13.5%	2,485	14.1%	5,567	14.0%
Age 65 - 74	1,041	9.9%	1,808	10.3%	4,089	10.3%
Age 75 - 84	460	4.4%	783	4.5%	1,778	4.5%
Age 85+	178	1.7%	281	1.6%	659	1.7%

2024 Population by Age	Number	Percent	Number	Percent	Number	Percent
Age 0 - 4	785	7.2%	1,257	6.8%	2,968	7.0%
Age 5 - 9	803	7.3%	1,298	7.0%	2,996	7.1%
Age 10 - 14	847	7.7%	1,380	7.5%	3,131	7.4%
Age 15 - 19	745	6.8%	1,223	6.6%	2,803	6.6%
Age 20 - 24	524	4.8%	853	4.6%	2,001	4.7%
Age 25 - 34	1,342	12.3%	2,199	11.9%	5,077	12.0%
Age 35 - 44	1,393	12.7%	2,360	12.8%	5,445	12.8%
Age 45 - 54	1,230	11.2%	2,103	11.4%	4,825	11.4%
Age 55 - 64	1,312	12.0%	2,321	12.6%	5,280	12.4%
Age 65 - 74	1,194	10.9%	2,111	11.5%	4,829	11.4%
Age 75 - 84	584	5.3%	1,035	5.6%	2,404	5.7%
Age 85+	180	1.6%	295	1.6%	696	1.6%

Source: U.S. Census Bureau, Census 2010 Summary File 1. Esri forecasts for 2019 and 2024.

May 20, 2020

Demographic and Income Comparison Profile

Sealy, Texas
Rings: 5, 10, 15 mile radii

Prepared by U. McDuell
Latitude: 29.78487
Longitude: -96.15845

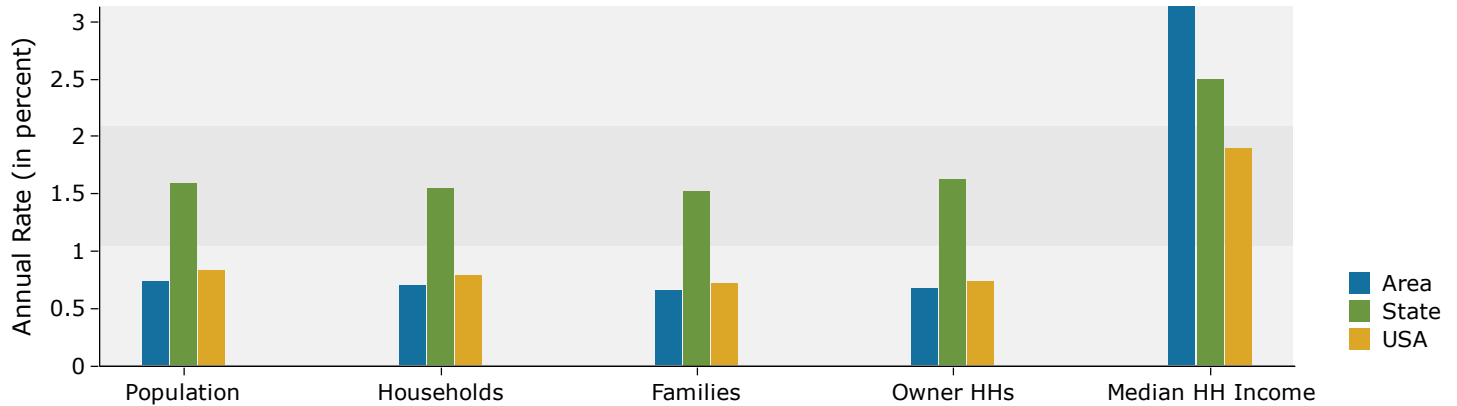
	5 miles		10 miles		15 miles	
2010 Race and Ethnicity	Number	Percent	Number	Percent	Number	Percent
White Alone	7,417	75.1%	12,034	75.2%	25,363	71.3%
Black Alone	1,017	10.3%	1,608	10.0%	4,717	13.3%
American Indian Alone	29	0.3%	61	0.4%	214	0.6%
Asian Alone	58	0.6%	86	0.5%	202	0.6%
Pacific Islander Alone	0	0.0%	0	0.0%	3	0.0%
Some Other Race Alone	1,100	11.1%	1,798	11.2%	4,269	12.0%
Two or More Races	260	2.6%	422	2.6%	827	2.3%
Hispanic Origin (Any Race)	3,222	32.6%	5,032	31.4%	11,085	31.1%
2019 Race and Ethnicity	Number	Percent	Number	Percent	Number	Percent
White Alone	7,695	73.0%	12,786	72.7%	27,089	68.1%
Black Alone	1,009	9.6%	1,691	9.6%	5,409	13.6%
American Indian Alone	32	0.3%	71	0.4%	247	0.6%
Asian Alone	95	0.9%	142	0.8%	316	0.8%
Pacific Islander Alone	0	0.0%	0	0.0%	4	0.0%
Some Other Race Alone	1,378	13.1%	2,325	13.2%	5,577	14.0%
Two or More Races	337	3.2%	563	3.2%	1,110	2.8%
Hispanic Origin (Any Race)	4,014	38.1%	6,455	36.7%	14,316	36.0%
2024 Race and Ethnicity	Number	Percent	Number	Percent	Number	Percent
White Alone	7,854	71.8%	13,176	71.5%	28,345	66.8%
Black Alone	989	9.0%	1,704	9.2%	5,749	13.5%
American Indian Alone	35	0.3%	77	0.4%	265	0.6%
Asian Alone	119	1.1%	178	1.0%	414	1.0%
Pacific Islander Alone	0	0.0%	0	0.0%	6	0.0%
Some Other Race Alone	1,551	14.2%	2,645	14.3%	6,376	15.0%
Two or More Races	390	3.6%	655	3.6%	1,299	3.1%
Hispanic Origin (Any Race)	4,564	41.7%	7,421	40.3%	16,569	39.0%

Source: U.S. Census Bureau, Census 2010 Summary File 1. Esri forecasts for 2019 and 2024.

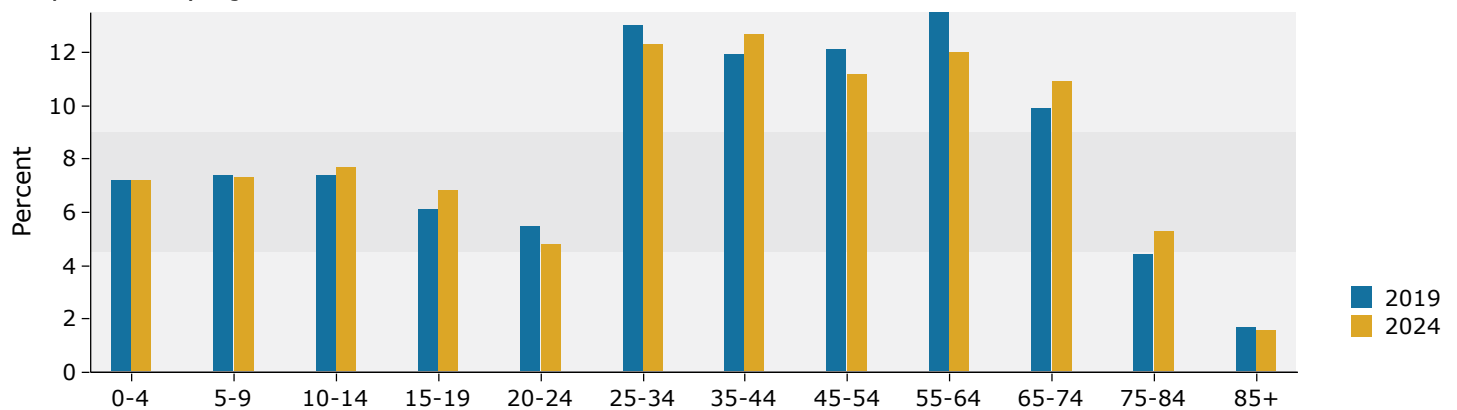
May 20, 2020

5 miles

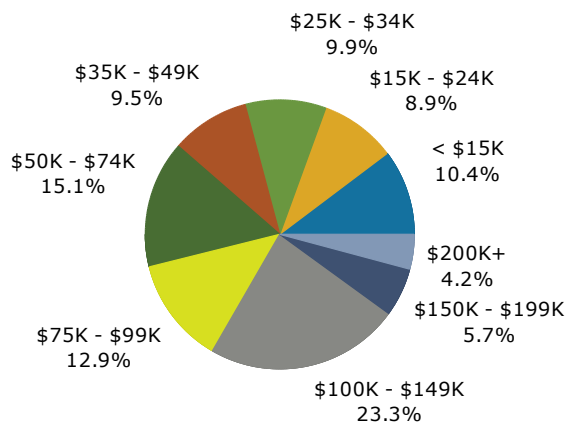
Trends 2019-2024



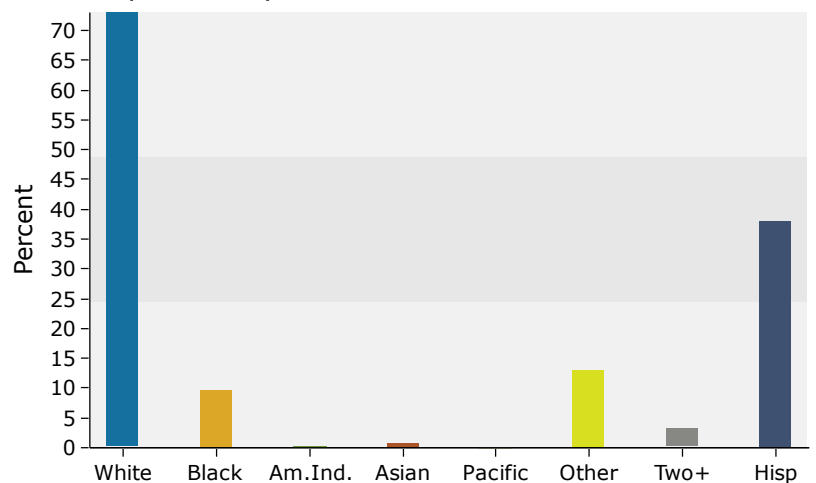
Population by Age



2019 Household Income

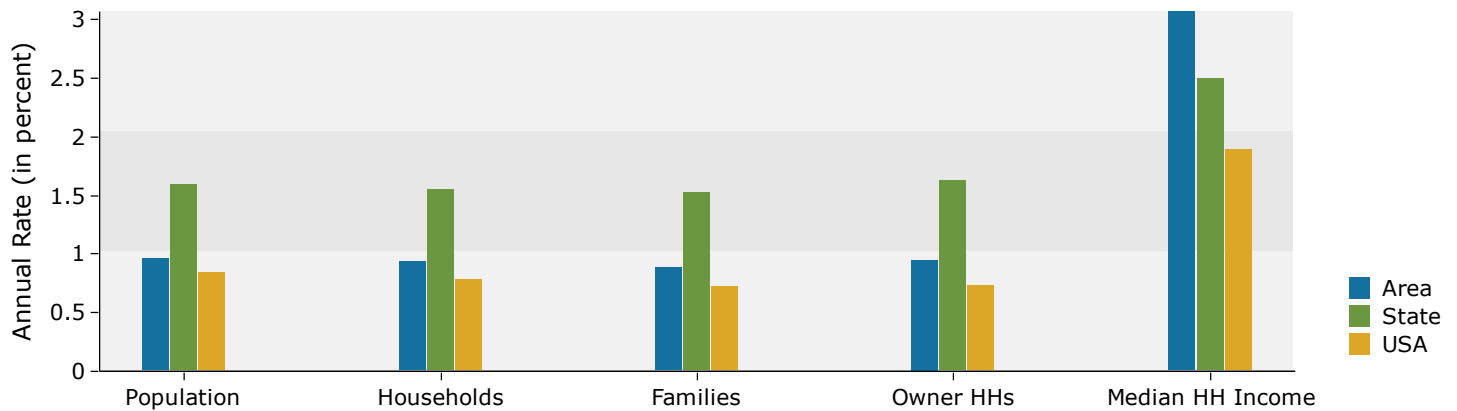


2019 Population by Race

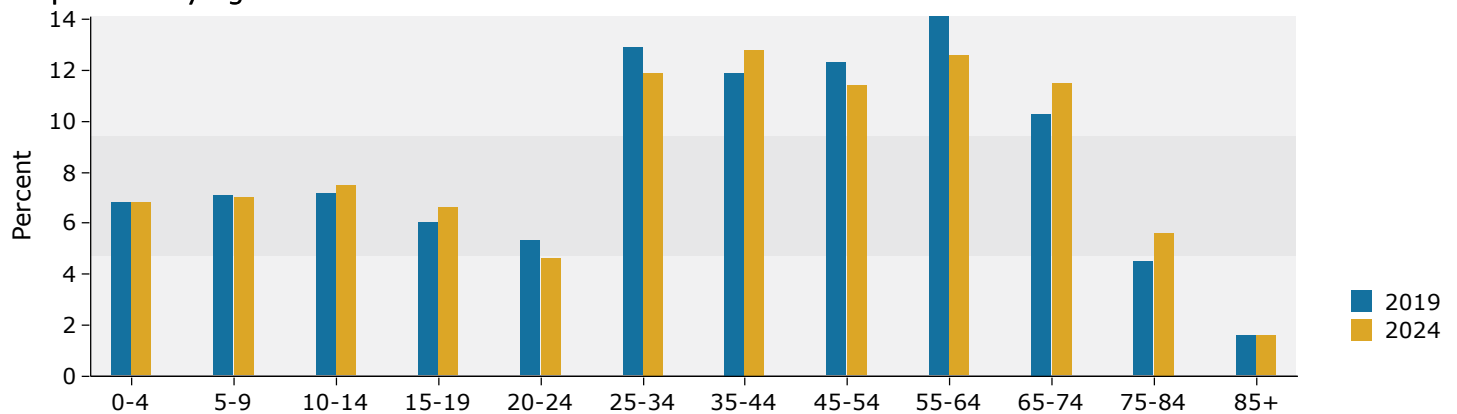


10 miles

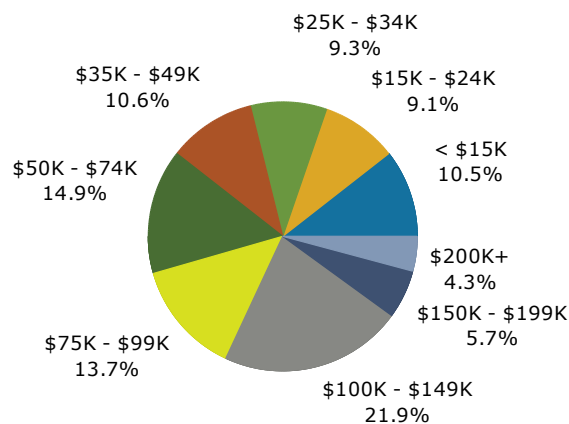
Trends 2019-2024



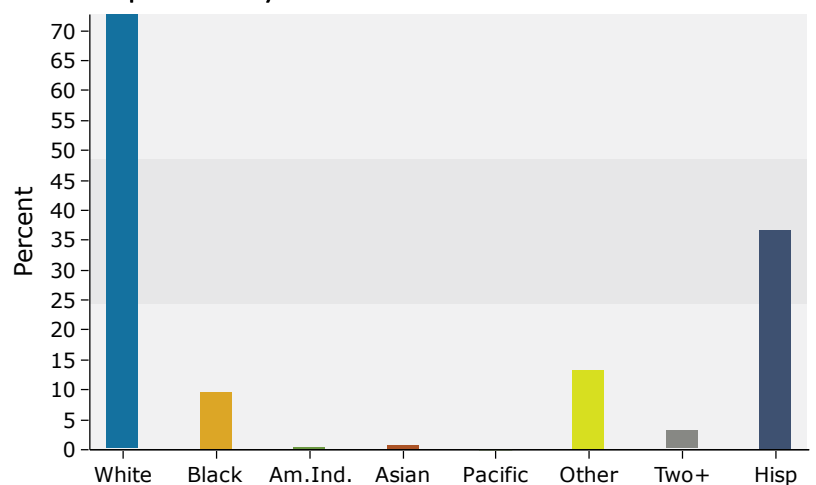
Population by Age



2019 Household Income

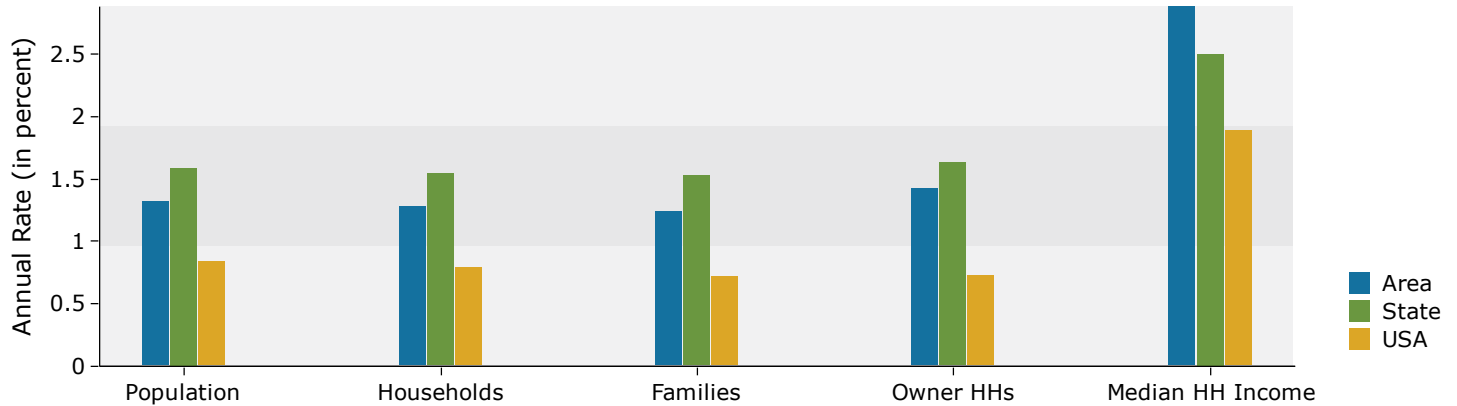


2019 Population by Race

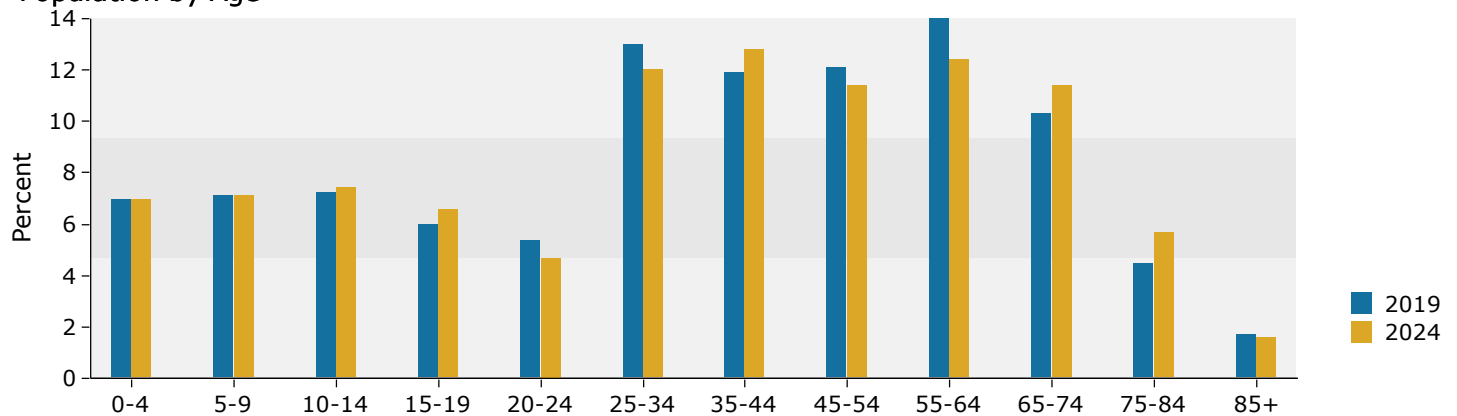


15 miles

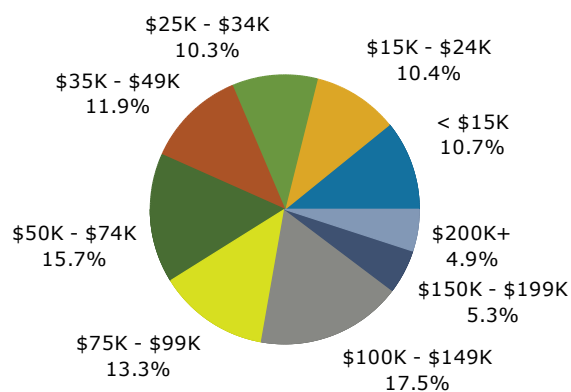
Trends 2019-2024



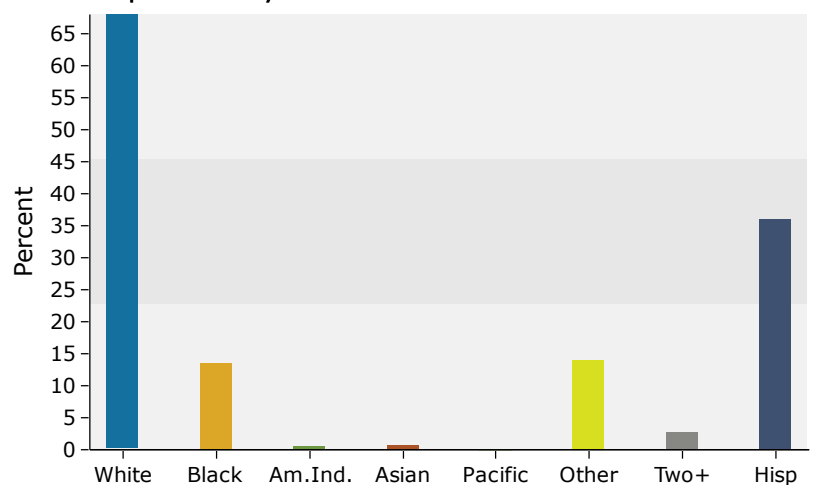
Population by Age



2019 Household Income



2019 Population by Race



Disposable Income Profile

Sealy, Texas
Ring: 5 mile radius

Prepared by U. McDuell
Latitude: 29.78487
Longitude: -96.15845

	Census 2010	2019	2024	2019-2024 Change	2019-2024 Annual Rate
Population	9,881	10,547	10,938	391	0.73%
Median Age	37.1	37.7	37.9	0.2	0.11%
Households	3,504	3,711	3,843	132	0.70%
Average Household Size	2.81	2.83	2.84	0.01	0.07%

2019 Households by Disposable Income	Number	Percent
Total	3,711	100.0%
<\$15,000	437	11.8%
\$15,000-\$24,999	427	11.5%
\$25,000-\$34,999	358	9.6%
\$35,000-\$49,999	467	12.6%
\$50,000-\$74,999	661	17.8%
\$75,000-\$99,999	624	16.8%
\$100,000-\$149,999	574	15.5%
\$150,000-\$199,999	89	2.4%
\$200,000+	74	2.0%
Median Disposable Income	\$54,600	
Average Disposable Income	\$66,201	

2019 Disposable Income by Age of Householder	Number of Households						
	<25	25-34	35-44	45-54	55-64	65-74	75+
Total	107	544	615	652	785	613	395
<\$15,000	21	63	54	55	79	80	86
\$15,000-\$24,999	19	60	51	49	69	81	97
\$25,000-\$34,999	12	62	52	45	53	73	61
\$35,000-\$49,999	15	71	78	75	111	78	38
\$50,000-\$74,999	14	92	115	118	176	111	35
\$75,000-\$99,999	11	85	148	125	145	77	32
\$100,000-\$149,999	15	94	94	141	118	76	35
\$150,000-\$199,999	0	9	14	24	14	22	6
\$200,000+	0	7	10	19	19	15	4
Median Disposable Income	\$36,101	\$52,999	\$63,564	\$70,265	\$58,756	\$48,618	\$26,751
Average Disposable Income	\$49,432	\$63,989	\$70,225	\$78,767	\$69,389	\$63,440	\$44,733

Data Note: Disposable Income is after-tax household income. Disposable income forecasts are based on the Current Population Survey, U.S. Census Bureau. Detail may not sum to totals due to rounding

Source: U.S. Census Bureau, Census 2010 Summary File 1. Esri forecasts for 2019 and 2024.

Disposable Income Profile

Sealy, Texas
Ring: 10 mile radius

Prepared by U. McDuell
Latitude: 29.78487
Longitude: -96.15845

	Census 2010	2019	2024	2019-2024 Change	2019-2024 Annual Rate
Population	16,009	17,577	18,435	858	0.96%
Median Age	38.0	38.7	39.1	0.4	0.21%
Households	5,748	6,278	6,580	302	0.94%
Average Household Size	2.77	2.78	2.79	0.01	0.07%

2019 Households by Disposable Income	Number	Percent
Total	6,278	100.0%
<\$15,000	748	11.9%
\$15,000-\$24,999	716	11.4%
\$25,000-\$34,999	612	9.7%
\$35,000-\$49,999	823	13.1%
\$50,000-\$74,999	1,143	18.2%
\$75,000-\$99,999	1,018	16.2%
\$100,000-\$149,999	937	14.9%
\$150,000-\$199,999	155	2.5%
\$200,000+	125	2.0%
Median Disposable Income	\$53,743	
Average Disposable Income	\$65,692	

2019 Disposable Income by Age of Householder	Number of Households						
	<25	25-34	35-44	45-54	55-64	65-74	75+
Total	163	894	1,021	1,113	1,353	1,074	659
<\$15,000	31	106	86	95	144	138	147
\$15,000-\$24,999	29	99	83	84	120	141	160
\$25,000-\$34,999	18	110	84	79	95	130	96
\$35,000-\$49,999	26	121	135	135	197	139	69
\$50,000-\$74,999	22	156	199	201	307	195	64
\$75,000-\$99,999	17	129	238	211	236	132	54
\$100,000-\$149,999	21	147	154	233	196	132	54
\$150,000-\$199,999	0	14	25	41	26	40	9
\$200,000+	0	11	16	33	33	27	5
Median Disposable Income	\$36,691	\$51,141	\$62,928	\$68,713	\$57,358	\$48,450	\$26,763
Average Disposable Income	\$48,890	\$62,396	\$70,345	\$78,135	\$68,494	\$63,607	\$43,839

Data Note: Disposable Income is after-tax household income. Disposable income forecasts are based on the Current Population Survey, U.S. Census Bureau. Detail may not sum to totals due to rounding

Source: U.S. Census Bureau, Census 2010 Summary File 1. Esri forecasts for 2019 and 2024.

Disposable Income Profile

Sealy, Texas
Ring: 15 mile radius

Prepared by U. McDuell
Latitude: 29.78487
Longitude: -96.15845

	Census 2010	2019	2024	2019-2024 Change	2019-2024 Annual Rate
Population	35,595	39,753	42,455	2,702	1.32%
Median Age	38.0	38.5	39.1	0.6	0.31%
Households	12,867	14,248	15,184	936	1.28%
Average Household Size	2.73	2.75	2.76	0.01	0.07%

2019 Households by Disposable Income	Number	Percent
Total	14,248	100.0%
<\$15,000	1,772	12.4%
\$15,000-\$24,999	1,809	12.7%
\$25,000-\$34,999	1,558	10.9%
\$35,000-\$49,999	2,037	14.3%
\$50,000-\$74,999	2,614	18.3%
\$75,000-\$99,999	1,931	13.6%
\$100,000-\$149,999	1,816	12.7%
\$150,000-\$199,999	392	2.8%
\$200,000+	318	2.2%
Median Disposable Income	\$49,482	
Average Disposable Income	\$63,090	

2019 Disposable Income by Age of Householder	Number of Households						
	<25	25-34	35-44	45-54	55-64	65-74	75+
Total	398	2,024	2,312	2,480	3,036	2,470	1,528
<\$15,000	84	237	205	229	342	327	348
\$15,000-\$24,999	80	247	211	220	306	350	397
\$25,000-\$34,999	56	293	238	206	240	315	210
\$35,000-\$49,999	66	313	339	331	482	338	168
\$50,000-\$74,999	47	384	446	439	685	464	148
\$75,000-\$99,999	31	226	442	405	440	270	117
\$100,000-\$149,999	32	262	316	445	388	262	110
\$150,000-\$199,999	0	35	71	111	68	87	19
\$200,000+	1	26	44	93	85	57	12
Median Disposable Income	\$30,418	\$45,260	\$56,919	\$62,098	\$53,691	\$44,794	\$25,689
Average Disposable Income	\$42,358	\$58,219	\$68,353	\$76,574	\$66,584	\$60,726	\$41,969

Data Note: Disposable Income is after-tax household income. Disposable income forecasts are based on the Current Population Survey, U.S. Census Bureau. Detail may not sum to totals due to rounding

Source: U.S. Census Bureau, Census 2010 Summary File 1. Esri forecasts for 2019 and 2024.

Household Income Profile

Sealy, Texas
Ring: 5 mile radius

Prepared by U. McDuell
Latitude: 29.78487
Longitude: -96.15845

Summary	2019	2024	2019-2024 Change	2019-2024 Annual Rate
Population	10,547	10,938	391	0.73%
Households	3,711	3,843	132	0.70%
Median Age	37.7	37.9	0.2	0.11%
Average Household Size	2.83	2.84	0.01	0.07%

Households by Income	2019		2024	
	Number	Percent	Number	Percent
Household	3,711	100%	3,843	100%
<\$15,000	386	10.4%	332	8.6%
\$15,000-\$24,999	331	8.9%	294	7.7%
\$25,000-\$34,999	367	9.9%	333	8.7%
\$35,000-\$49,999	352	9.5%	331	8.6%
\$50,000-\$74,999	562	15.1%	555	14.4%
\$75,000-\$99,999	480	12.9%	495	12.9%
\$100,000-\$149,999	865	23.3%	1,016	26.4%
\$150,000-\$199,999	211	5.7%	280	7.3%
\$200,000+	156	4.2%	207	5.4%
Median Household Income	\$66,880		\$78,018	
Average Household Income	\$81,764		\$93,731	
Per Capita Income	\$29,375		\$33,635	

Data Note: Income is reported for households as of July 1, 2019 and represents annual income for the preceding year, expressed in 2017 dollars. Income is reported for households as of July 1, 2024 and represents annual income for the preceding year, expressed in 2022 dollars
Source: U.S. Census Bureau, Census 2010 Summary File 1. Esri Forecasts for 2019 and 2024.

Household Income Profile

Sealy, Texas
Ring: 5 mile radius

Prepared by U. McDuell
Latitude: 29.78487
Longitude: -96.15845

2019 Households by Income and Age of Householder							
	<25	25-34	35-44	45-54	55-64	65-74	75+
HH Income Base	107	544	615	652	785	613	395
<\$15,000	20	60	54	50	68	62	73
\$15,000-\$24,999	18	45	48	42	55	57	67
\$25,000-\$34,999	12	48	43	41	52	83	89
\$35,000-\$49,999	15	56	56	53	68	63	42
\$50,000-\$74,999	14	81	84	96	141	113	33
\$75,000-\$99,999	8	61	94	101	131	63	23
\$100,000-\$149,999	19	143	171	170	200	116	46
\$150,000-\$199,999	3	35	36	62	36	25	14
\$200,000+	0	16	29	37	36	29	8
Median HH Income	\$38,544	\$68,028	\$79,685	\$84,077	\$76,321	\$56,808	\$30,544
Average HH Income	\$54,037	\$80,613	\$88,592	\$95,984	\$86,727	\$77,523	\$53,472
Percent Distribution							
	<25	25-34	35-44	45-54	55-64	65-74	75+
HH Income Base	100%	100%	100%	100%	100%	100%	100%
<\$15,000	18.7%	11.0%	8.8%	7.7%	8.7%	10.1%	18.5%
\$15,000-\$24,999	16.8%	8.3%	7.8%	6.4%	7.0%	9.3%	17.0%
\$25,000-\$34,999	11.2%	8.8%	7.0%	6.3%	6.6%	13.5%	22.5%
\$35,000-\$49,999	14.0%	10.3%	9.1%	8.1%	8.7%	10.3%	10.6%
\$50,000-\$74,999	13.1%	14.9%	13.7%	14.7%	18.0%	18.4%	8.4%
\$75,000-\$99,999	7.5%	11.2%	15.3%	15.5%	16.7%	10.3%	5.8%
\$100,000-\$149,999	17.8%	26.3%	27.8%	26.1%	25.5%	18.9%	11.6%
\$150,000-\$199,999	2.8%	6.4%	5.9%	9.5%	4.6%	4.1%	3.5%
\$200,000+	0.0%	2.9%	4.7%	5.7%	4.6%	4.7%	2.0%

Data Note: Income is reported for households as of July 1, 2019 and represents annual income for the preceding year, expressed in 2017 dollars. Income is reported for households as of July 1, 2024 and represents annual income for the preceding year, expressed in 2022 dollars
Source: U.S. Census Bureau, Census 2010 Summary File 1. Esri Forecasts for 2019 and 2024.

Household Income Profile

Sealy, Texas
Ring: 5 mile radius

Prepared by U. McDuell
Latitude: 29.78487
Longitude: -96.15845

2024 Households by Income and Age of Householder							
	<25	25-34	35-44	45-54	55-64	65-74	75+
HH Income Base	111	537	679	627	718	701	470
<\$15,000	19	47	49	39	49	55	75
\$15,000-\$24,999	16	38	44	33	39	54	70
\$25,000-\$34,999	10	40	37	30	42	79	96
\$35,000-\$49,999	15	48	55	43	54	68	48
\$50,000-\$74,999	15	76	87	86	121	129	41
\$75,000-\$99,999	8	61	107	96	117	75	32
\$100,000-\$149,999	25	162	213	182	206	159	71
\$150,000-\$199,999	4	45	51	70	44	39	25
\$200,000+	0	20	38	48	45	43	12
Median HH Income	\$45,048	\$81,633	\$89,242	\$95,541	\$84,544	\$66,338	\$34,141
Average HH Income	\$62,343	\$92,262	\$100,520	\$110,602	\$100,491	\$91,069	\$64,155
Percent Distribution							
	<25	25-34	35-44	45-54	55-64	65-74	75+
HH Income Base	100%	100%	100%	100%	100%	100%	100%
<\$15,000	17.1%	8.8%	7.2%	6.2%	6.8%	7.8%	16.0%
\$15,000-\$24,999	14.4%	7.1%	6.5%	5.3%	5.4%	7.7%	14.9%
\$25,000-\$34,999	9.0%	7.4%	5.4%	4.8%	5.8%	11.3%	20.4%
\$35,000-\$49,999	13.5%	8.9%	8.1%	6.9%	7.5%	9.7%	10.2%
\$50,000-\$74,999	13.5%	14.2%	12.8%	13.7%	16.9%	18.4%	8.7%
\$75,000-\$99,999	7.2%	11.4%	15.8%	15.3%	16.3%	10.7%	6.8%
\$100,000-\$149,999	22.5%	30.2%	31.4%	29.0%	28.7%	22.7%	15.1%
\$150,000-\$199,999	3.6%	8.4%	7.5%	11.2%	6.1%	5.6%	5.3%
\$200,000+	0.0%	3.7%	5.6%	7.7%	6.3%	6.1%	2.6%

Data Note: Income is reported for households as of July 1, 2019 and represents annual income for the preceding year, expressed in 2017 dollars. Income is reported for households as of July 1, 2024 and represents annual income for the preceding year, expressed in 2022 dollars
Source: U.S. Census Bureau, Census 2010 Summary File 1. Esri Forecasts for 2019 and 2024.

Household Income Profile

Sealy, Texas
Ring: 10 mile radius

Prepared by U. McDuell
Latitude: 29.78487
Longitude: -96.15845

Summary	2019	2024	2019-2024 Change	2019-2024 Annual Rate
Population	17,577	18,435	858	0.96%
Households	6,278	6,580	302	0.94%
Median Age	38.7	39.1	0.4	0.21%
Average Household Size	2.78	2.79	0.01	0.07%

Households by Income	2019		2024	
	Number	Percent	Number	Percent
Household	6,278	100%	6,580	100%
<\$15,000	657	10.5%	575	8.7%
\$15,000-\$24,999	573	9.1%	516	7.8%
\$25,000-\$34,999	585	9.3%	542	8.2%
\$35,000-\$49,999	668	10.6%	635	9.7%
\$50,000-\$74,999	933	14.9%	953	14.5%
\$75,000-\$99,999	861	13.7%	911	13.8%
\$100,000-\$149,999	1,374	21.9%	1,626	24.7%
\$150,000-\$199,999	360	5.7%	474	7.2%
\$200,000+	268	4.3%	348	5.3%
Median Household Income	\$65,691		\$76,429	
Average Household Income	\$81,332		\$92,608	
Per Capita Income	\$29,285		\$33,321	

Data Note: Income is reported for households as of July 1, 2019 and represents annual income for the preceding year, expressed in 2017 dollars. Income is reported for households as of July 1, 2024 and represents annual income for the preceding year, expressed in 2022 dollars
Source: U.S. Census Bureau, Census 2010 Summary File 1. Esri Forecasts for 2019 and 2024.

Household Income Profile

Sealy, Texas
Ring: 10 mile radius

Prepared by U. McDuell
Latitude: 29.78487
Longitude: -96.15845

2019 Households by Income and Age of Householder							
	<25	25-34	35-44	45-54	55-64	65-74	75+
HH Income Base	163	894	1,021	1,113	1,353	1,074	659
<\$15,000	29	100	86	87	125	106	124
\$15,000-\$24,999	28	74	77	72	98	105	119
\$25,000-\$34,999	17	81	70	66	84	136	131
\$35,000-\$49,999	25	104	101	105	134	124	75
\$50,000-\$74,999	22	133	137	155	233	193	60
\$75,000-\$99,999	13	103	169	182	235	115	43
\$100,000-\$149,999	26	216	268	278	316	196	74
\$150,000-\$199,999	5	58	62	104	64	48	20
\$200,000+	0	27	50	64	64	53	11
Median HH Income	\$39,026	\$64,728	\$79,448	\$83,021	\$75,188	\$56,593	\$30,676
Average HH Income	\$53,432	\$79,087	\$89,020	\$95,290	\$86,003	\$77,925	\$51,878
Percent Distribution							
	<25	25-34	35-44	45-54	55-64	65-74	75+
HH Income Base	100%	100%	100%	100%	100%	100%	100%
<\$15,000	17.8%	11.2%	8.4%	7.8%	9.2%	9.9%	18.8%
\$15,000-\$24,999	17.2%	8.3%	7.5%	6.5%	7.2%	9.8%	18.1%
\$25,000-\$34,999	10.4%	9.1%	6.9%	5.9%	6.2%	12.7%	19.9%
\$35,000-\$49,999	15.3%	11.6%	9.9%	9.4%	9.9%	11.5%	11.4%
\$50,000-\$74,999	13.5%	14.9%	13.4%	13.9%	17.2%	18.0%	9.1%
\$75,000-\$99,999	8.0%	11.5%	16.6%	16.4%	17.4%	10.7%	6.5%
\$100,000-\$149,999	16.0%	24.2%	26.2%	25.0%	23.4%	18.2%	11.2%
\$150,000-\$199,999	3.1%	6.5%	6.1%	9.3%	4.7%	4.5%	3.0%
\$200,000+	0.0%	3.0%	4.9%	5.8%	4.7%	4.9%	1.7%

Data Note: Income is reported for households as of July 1, 2019 and represents annual income for the preceding year, expressed in 2017 dollars. Income is reported for households as of July 1, 2024 and represents annual income for the preceding year, expressed in 2022 dollars
Source: U.S. Census Bureau, Census 2010 Summary File 1. Esri Forecasts for 2019 and 2024.

Household Income Profile

Sealy, Texas
Ring: 10 mile radius

Prepared by U. McDuell
Latitude: 29.78487
Longitude: -96.15845

2024 Households by Income and Age of Householder							
	<25	25-34	35-44	45-54	55-64	65-74	75+
HH Income Base	171	871	1,147	1,077	1,252	1,246	817
<\$15,000	29	77	78	69	91	95	135
\$15,000-\$24,999	25	60	71	56	72	100	132
\$25,000-\$34,999	15	67	62	51	67	133	147
\$35,000-\$49,999	25	91	101	88	108	131	90
\$50,000-\$74,999	23	126	148	141	210	227	79
\$75,000-\$99,999	14	103	195	175	218	141	64
\$100,000-\$149,999	33	243	338	297	329	269	117
\$150,000-\$199,999	7	72	88	120	78	73	36
\$200,000+	0	31	65	80	79	77	17
Median HH Income	\$43,781	\$77,669	\$87,559	\$92,637	\$82,158	\$66,053	\$34,490
Average HH Income	\$60,598	\$90,344	\$100,525	\$108,896	\$99,146	\$91,027	\$61,414
Percent Distribution							
	<25	25-34	35-44	45-54	55-64	65-74	75+
HH Income Base	100%	100%	100%	100%	100%	100%	100%
<\$15,000	17.0%	8.8%	6.8%	6.4%	7.3%	7.6%	16.5%
\$15,000-\$24,999	14.6%	6.9%	6.2%	5.2%	5.8%	8.0%	16.2%
\$25,000-\$34,999	8.8%	7.7%	5.4%	4.7%	5.4%	10.7%	18.0%
\$35,000-\$49,999	14.6%	10.4%	8.8%	8.2%	8.6%	10.5%	11.0%
\$50,000-\$74,999	13.5%	14.5%	12.9%	13.1%	16.8%	18.2%	9.7%
\$75,000-\$99,999	8.2%	11.8%	17.0%	16.2%	17.4%	11.3%	7.8%
\$100,000-\$149,999	19.3%	27.9%	29.5%	27.6%	26.3%	21.6%	14.3%
\$150,000-\$199,999	4.1%	8.3%	7.7%	11.1%	6.2%	5.9%	4.4%
\$200,000+	0.0%	3.6%	5.7%	7.4%	6.3%	6.2%	2.1%

Data Note: Income is reported for households as of July 1, 2019 and represents annual income for the preceding year, expressed in 2017 dollars. Income is reported for households as of July 1, 2024 and represents annual income for the preceding year, expressed in 2022 dollars
Source: U.S. Census Bureau, Census 2010 Summary File 1. Esri Forecasts for 2019 and 2024.

Household Income Profile

Sealy, Texas
Ring: 15 mile radius

Prepared by U. McDuell
Latitude: 29.78487
Longitude: -96.15845

Summary	2019	2024	2019-2024 Change	2019-2024 Annual Rate
Population	39,753	42,455	2,702	1.32%
Households	14,248	15,184	936	1.28%
Median Age	38.5	39.1	0.6	0.31%
Average Household Size	2.75	2.76	0.01	0.07%

Households by Income	2019		2024	
	Number	Percent	Number	Percent
Household	14,248	100%	15,184	100%
<\$15,000	1,529	10.7%	1,355	8.9%
\$15,000-\$24,999	1,484	10.4%	1,346	8.9%
\$25,000-\$34,999	1,465	10.3%	1,384	9.1%
\$35,000-\$49,999	1,700	11.9%	1,684	11.1%
\$50,000-\$74,999	2,232	15.7%	2,390	15.7%
\$75,000-\$99,999	1,892	13.3%	2,092	13.8%
\$100,000-\$149,999	2,494	17.5%	3,040	20.0%
\$150,000-\$199,999	760	5.3%	1,024	6.7%
\$200,000+	692	4.9%	870	5.7%
Median Household Income	\$58,450		\$67,364	
Average Household Income	\$78,897		\$89,624	
Per Capita Income	\$28,142		\$31,895	

Data Note: Income is reported for households as of July 1, 2019 and represents annual income for the preceding year, expressed in 2017 dollars. Income is reported for households as of July 1, 2024 and represents annual income for the preceding year, expressed in 2022 dollars
Source: U.S. Census Bureau, Census 2010 Summary File 1. Esri Forecasts for 2019 and 2024.

Household Income Profile

Sealy, Texas
Ring: 15 mile radius

Prepared by U. McDuell
Latitude: 29.78487
Longitude: -96.15845

2019 Households by Income and Age of Householder							
	<25	25-34	35-44	45-54	55-64	65-74	75+
HH Income Base	398	2,024	2,312	2,480	3,036	2,470	1,528
<\$15,000	76	220	205	210	291	244	283
\$15,000-\$24,999	78	174	191	186	254	272	328
\$25,000-\$34,999	56	224	205	177	209	320	272
\$35,000-\$49,999	65	264	261	271	341	312	186
\$50,000-\$74,999	48	349	328	357	556	455	139
\$75,000-\$99,999	28	245	358	378	506	272	105
\$100,000-\$149,999	38	376	479	507	565	376	153
\$150,000-\$199,999	8	107	143	211	147	105	40
\$200,000+	2	65	143	182	168	113	21
Median HH Income	\$32,630	\$57,190	\$71,592	\$76,906	\$67,204	\$53,360	\$29,749
Average HH Income	\$46,757	\$74,430	\$87,905	\$94,708	\$84,693	\$74,574	\$49,367
Percent Distribution							
	<25	25-34	35-44	45-54	55-64	65-74	75+
HH Income Base	100%	100%	100%	100%	100%	100%	100%
<\$15,000	19.1%	10.9%	8.9%	8.5%	9.6%	9.9%	18.5%
\$15,000-\$24,999	19.6%	8.6%	8.3%	7.5%	8.4%	11.0%	21.5%
\$25,000-\$34,999	14.1%	11.1%	8.9%	7.1%	6.9%	13.0%	17.8%
\$35,000-\$49,999	16.3%	13.0%	11.3%	10.9%	11.2%	12.6%	12.2%
\$50,000-\$74,999	12.1%	17.2%	14.2%	14.4%	18.3%	18.4%	9.1%
\$75,000-\$99,999	7.0%	12.1%	15.5%	15.2%	16.7%	11.0%	6.9%
\$100,000-\$149,999	9.5%	18.6%	20.7%	20.4%	18.6%	15.2%	10.0%
\$150,000-\$199,999	2.0%	5.3%	6.2%	8.5%	4.8%	4.3%	2.6%
\$200,000+	0.5%	3.2%	6.2%	7.3%	5.5%	4.6%	1.4%

Data Note: Income is reported for households as of July 1, 2019 and represents annual income for the preceding year, expressed in 2017 dollars. Income is reported for households as of July 1, 2024 and represents annual income for the preceding year, expressed in 2022 dollars
Source: U.S. Census Bureau, Census 2010 Summary File 1. Esri Forecasts for 2019 and 2024.

Household Income Profile

Sealy, Texas
Ring: 15 mile radius

Prepared by U. McDuell
Latitude: 29.78487
Longitude: -96.15845

2024 Households by Income and Age of Householder							
	<25	25-34	35-44	45-54	55-64	65-74	75+
HH Income Base	420	1,992	2,641	2,471	2,849	2,884	1,927
<\$15,000	78	173	188	168	212	225	312
\$15,000-\$24,999	71	141	174	148	191	260	359
\$25,000-\$34,999	52	189	196	146	166	323	312
\$35,000-\$49,999	69	243	275	243	287	330	236
\$50,000-\$74,999	53	348	373	344	523	554	195
\$75,000-\$99,999	31	253	422	383	496	347	160
\$100,000-\$149,999	49	433	618	564	605	524	247
\$150,000-\$199,999	14	134	211	254	177	160	74
\$200,000+	2	78	185	221	192	161	31
Median HH Income	\$36,329	\$65,974	\$80,359	\$85,317	\$76,666	\$61,266	\$34,146
Average HH Income	\$53,386	\$85,309	\$99,625	\$108,225	\$96,862	\$86,519	\$58,373
Percent Distribution							
	<25	25-34	35-44	45-54	55-64	65-74	75+
HH Income Base	100%	100%	100%	100%	100%	100%	100%
<\$15,000	18.6%	8.7%	7.1%	6.8%	7.4%	7.8%	16.2%
\$15,000-\$24,999	16.9%	7.1%	6.6%	6.0%	6.7%	9.0%	18.6%
\$25,000-\$34,999	12.4%	9.5%	7.4%	5.9%	5.8%	11.2%	16.2%
\$35,000-\$49,999	16.4%	12.2%	10.4%	9.8%	10.1%	11.4%	12.2%
\$50,000-\$74,999	12.6%	17.5%	14.1%	13.9%	18.4%	19.2%	10.1%
\$75,000-\$99,999	7.4%	12.7%	16.0%	15.5%	17.4%	12.0%	8.3%
\$100,000-\$149,999	11.7%	21.7%	23.4%	22.8%	21.2%	18.2%	12.8%
\$150,000-\$199,999	3.3%	6.7%	8.0%	10.3%	6.2%	5.5%	3.8%
\$200,000+	0.5%	3.9%	7.0%	8.9%	6.7%	5.6%	1.6%

Data Note: Income is reported for households as of July 1, 2019 and represents annual income for the preceding year, expressed in 2017 dollars. Income is reported for households as of July 1, 2024 and represents annual income for the preceding year, expressed in 2022 dollars
Source: U.S. Census Bureau, Census 2010 Summary File 1. Esri Forecasts for 2019 and 2024.

Business Summary

Sealy, Texas
Rings: 5, 10, 15 mile radii

Prepared by U. McDuell
Latitude: 29.78487
Longitude: -96.15845

Data for all businesses in area				5 miles		10 miles				15 miles			
Total Businesses:				484		598				1,464			
Total Employees:				4,214		5,287				13,346			
Total Residential Population:				10,547		17,577				39,753			
Employee/Residential Population Ratio (per 100 Residents)				40		30				34			
by SIC Codes	Businesses		Employees		Businesses		Employees		Businesses		Employees		
	Number	Percent	Number	Percent	Number	Percent	Number	Percent	Number	Percent	Number	Percent	
Agriculture & Mining	16	3.3%	53	1.3%	24	4.0%	97	1.8%	78	5.3%	448	3.4%	
Construction	45	9.3%	415	9.8%	58	9.7%	512	9.7%	121	8.3%	928	7.0%	
Manufacturing	23	4.8%	380	9.0%	31	5.2%	668	12.6%	80	5.5%	2,356	17.7%	
Transportation	15	3.1%	200	4.7%	20	3.3%	250	4.7%	47	3.2%	448	3.4%	
Communication	4	0.8%	12	0.3%	5	0.8%	16	0.3%	9	0.6%	29	0.2%	
Utility	5	1.0%	26	0.6%	6	1.0%	37	0.7%	15	1.0%	161	1.2%	
Wholesale Trade	21	4.3%	321	7.6%	29	4.8%	421	8.0%	68	4.6%	984	7.4%	
Retail Trade Summary	110	22.7%	1,052	25.0%	130	21.7%	1,213	22.9%	304	20.8%	2,535	19.0%	
Home Improvement	12	2.5%	120	2.8%	13	2.2%	129	2.4%	26	1.8%	215	1.6%	
General Merchandise Stores	9	1.9%	88	2.1%	10	1.7%	96	1.8%	16	1.1%	143	1.1%	
Food Stores	11	2.3%	91	2.2%	13	2.2%	101	1.9%	37	2.5%	335	2.5%	
Auto Dealers, Gas Stations, Auto Aftermarket	18	3.7%	252	6.0%	22	3.7%	281	5.3%	57	3.9%	598	4.5%	
Apparel & Accessory Stores	2	0.4%	16	0.4%	2	0.3%	24	0.5%	5	0.3%	32	0.2%	
Furniture & Home Furnishings	3	0.6%	29	0.7%	4	0.7%	41	0.8%	12	0.8%	70	0.5%	
Eating & Drinking Places	33	6.8%	360	8.5%	39	6.5%	435	8.2%	86	5.9%	909	6.8%	
Miscellaneous Retail	23	4.8%	95	2.3%	27	4.5%	107	2.0%	65	4.4%	232	1.7%	
Finance, Insurance, Real Estate Summary	35	7.2%	145	3.4%	39	6.5%	160	3.0%	106	7.2%	462	3.5%	
Banks, Savings & Lending Institutions	7	1.4%	60	1.4%	7	1.2%	62	1.2%	21	1.4%	208	1.6%	
Securities Brokers	3	0.6%	7	0.2%	3	0.5%	8	0.2%	11	0.8%	32	0.2%	
Insurance Carriers & Agents	7	1.4%	23	0.5%	7	1.2%	24	0.5%	18	1.2%	62	0.5%	
Real Estate, Holding, Other Investment Offices	19	3.9%	54	1.3%	22	3.7%	66	1.2%	55	3.8%	160	1.2%	
Services Summary	164	33.9%	1,436	34.1%	196	32.8%	1,705	32.2%	479	32.7%	4,205	31.5%	
Hotels & Lodging	8	1.7%	48	1.1%	11	1.8%	66	1.2%	24	1.6%	132	1.0%	
Automotive Services	26	5.4%	154	3.7%	31	5.2%	178	3.4%	57	3.9%	270	2.0%	
Motion Pictures & Amusements	10	2.1%	27	0.6%	13	2.2%	68	1.3%	27	1.8%	238	1.8%	
Health Services	20	4.1%	216	5.1%	22	3.7%	247	4.7%	50	3.4%	698	5.2%	
Legal Services	3	0.6%	7	0.2%	3	0.5%	10	0.2%	10	0.7%	28	0.2%	
Education Institutions & Libraries	10	2.1%	602	14.3%	12	2.0%	677	12.8%	37	2.5%	1,363	10.2%	
Other Services	87	18.0%	383	9.1%	103	17.2%	458	8.7%	273	18.6%	1,476	11.1%	
Government	19	3.9%	166	3.9%	22	3.7%	186	3.5%	69	4.7%	689	5.2%	
Unclassified Establishments	28	5.8%	7	0.2%	37	6.2%	22	0.4%	88	6.0%	100	0.7%	
Totals	484	100.0%	4,214	100.0%	598	100.0%	5,287	100.0%	1,464	100.0%	13,346	100.0%	

Source: Copyright 2019 Infogroup, Inc. All rights reserved. Esri Total Residential Population forecasts for 2019.

Date Note: Data on the Business Summary report is calculated using **Esri's Data allocation method** which uses census block groups to allocate business summary data to custom areas.

May 20, 2020

Business Summary

Sealy, Texas
Rings: 5, 10, 15 mile radii

Prepared by U. McDuell
Latitude: 29.78487
Longitude: -96.15845

by NAICS Codes	Businesses		Employees		Businesses		Employees		Businesses		Employees	
	Number	Percent	Number	Percent	Number	Percent	Number	Percent	Number	Percent	Number	Percent
Agriculture, Forestry, Fishing & Hunting	7	1.4%	16	0.4%	11	1.8%	33	0.6%	31	2.1%	125	0.9%
Mining	2	0.4%	15	0.4%	3	0.5%	24	0.5%	7	0.5%	42	0.3%
Utilities	1	0.2%	6	0.1%	2	0.3%	9	0.2%	8	0.5%	116	0.9%
Construction	46	9.5%	420	10.0%	60	10.0%	523	9.9%	132	9.0%	1,049	7.9%
Manufacturing	24	5.0%	388	9.2%	33	5.5%	678	12.8%	84	5.7%	2,411	18.1%
Wholesale Trade	21	4.3%	321	7.6%	28	4.7%	419	7.9%	66	4.5%	945	7.1%
Retail Trade	72	14.9%	677	16.1%	86	14.4%	762	14.4%	206	14.1%	1,578	11.8%
Motor Vehicle & Parts Dealers	11	2.3%	227	5.4%	12	2.0%	241	4.6%	24	1.6%	388	2.9%
Furniture & Home Furnishings Stores	1	0.2%	3	0.1%	2	0.3%	3	0.1%	4	0.3%	12	0.1%
Electronics & Appliance Stores	2	0.4%	27	0.6%	2	0.3%	38	0.7%	7	0.5%	59	0.4%
Bldg Material & Garden Equipment & Supplies Dealers	12	2.5%	120	2.8%	13	2.2%	129	2.4%	26	1.8%	216	1.6%
Food & Beverage Stores	10	2.1%	86	2.0%	12	2.0%	95	1.8%	30	2.0%	303	2.3%
Health & Personal Care Stores	7	1.4%	44	1.0%	7	1.2%	46	0.9%	11	0.8%	78	0.6%
Gasoline Stations	7	1.4%	25	0.6%	10	1.7%	40	0.8%	33	2.3%	210	1.6%
Clothing & Clothing Accessories Stores	3	0.6%	18	0.4%	3	0.5%	26	0.5%	10	0.7%	42	0.3%
Sport Goods, Hobby, Book, & Music Stores	6	1.2%	18	0.4%	7	1.2%	20	0.4%	9	0.6%	33	0.2%
General Merchandise Stores	9	1.9%	88	2.1%	10	1.7%	96	1.8%	16	1.1%	143	1.1%
Miscellaneous Store Retailers	5	1.0%	21	0.5%	7	1.2%	27	0.5%	31	2.1%	80	0.6%
Nonstore Retailers	1	0.2%	0	0.0%	1	0.2%	1	0.0%	4	0.3%	14	0.1%
Transportation & Warehousing	12	2.5%	182	4.3%	15	2.5%	231	4.4%	35	2.4%	362	2.7%
Information	7	1.4%	19	0.5%	8	1.3%	25	0.5%	22	1.5%	75	0.6%
Finance & Insurance	18	3.7%	95	2.3%	19	3.2%	99	1.9%	52	3.6%	307	2.3%
Central Bank/Credit Intermediation & Related Activities	9	1.9%	65	1.5%	9	1.5%	67	1.3%	23	1.6%	213	1.6%
Securities, Commodity Contracts & Other Financial	3	0.6%	7	0.2%	3	0.5%	8	0.2%	11	0.8%	32	0.2%
Insurance Carriers & Related Activities; Funds, Trusts &	7	1.4%	23	0.5%	7	1.2%	24	0.5%	18	1.2%	62	0.5%
Real Estate, Rental & Leasing	29	6.0%	87	2.1%	36	6.0%	108	2.0%	82	5.6%	211	1.6%
Professional, Scientific & Tech Services	20	4.1%	65	1.5%	24	4.0%	89	1.7%	80	5.5%	395	3.0%
Legal Services	5	1.0%	15	0.4%	5	0.8%	18	0.3%	13	0.9%	49	0.4%
Management of Companies & Enterprises	0	0.0%	0	0.0%	0	0.0%	0	0.0%	2	0.1%	9	0.1%
Administrative & Support & Waste Management & Remediation	13	2.7%	49	1.2%	18	3.0%	74	1.4%	47	3.2%	250	1.9%
Educational Services	10	2.1%	604	14.3%	14	2.3%	681	12.9%	36	2.5%	1,351	10.1%
Health Care & Social Assistance	32	6.6%	326	7.7%	34	5.7%	371	7.0%	78	5.3%	1,208	9.1%
Arts, Entertainment & Recreation	4	0.8%	24	0.6%	6	1.0%	64	1.2%	15	1.0%	233	1.7%
Accommodation & Food Services	42	8.7%	410	9.7%	51	8.5%	503	9.5%	112	7.7%	1,047	7.8%
Accommodation	8	1.7%	48	1.1%	11	1.8%	66	1.2%	24	1.6%	132	1.0%
Food Services & Drinking Places	34	7.0%	362	8.6%	40	6.7%	436	8.2%	88	6.0%	915	6.9%
Other Services (except Public Administration)	78	16.1%	336	8.0%	92	15.4%	385	7.3%	212	14.5%	845	6.3%
Automotive Repair & Maintenance	20	4.1%	129	3.1%	23	3.8%	147	2.8%	42	2.9%	219	1.6%
Public Administration	19	3.9%	166	3.9%	22	3.7%	186	3.5%	69	4.7%	689	5.2%
Unclassified Establishments	28	5.8%	7	0.2%	37	6.2%	22	0.4%	88	6.0%	100	0.7%
Total	484	100.0%	4,214	100.0%	598	100.0%	5,287	100.0%	1,464	100.0%	13,346	100.0%

Source: Copyright 2019 Infogroup, Inc. All rights reserved. Esri Total Residential Population forecasts for 2019.

Date Note: Data on the Business Summary report is calculated using **Esri's Data allocation method** which uses census block groups to allocate business summary data to custom areas.

May 20, 2020