

Highest Ranked Occupations

Top 20 Occupations (5-Digit) in Sealy, TX (in Austin county) (ZIP 77474)

Lightcast Q4 2022 Data Set

December 2022

3555 Timmons Lane
Houston, Texas 77027
713-627-3200

Parameters

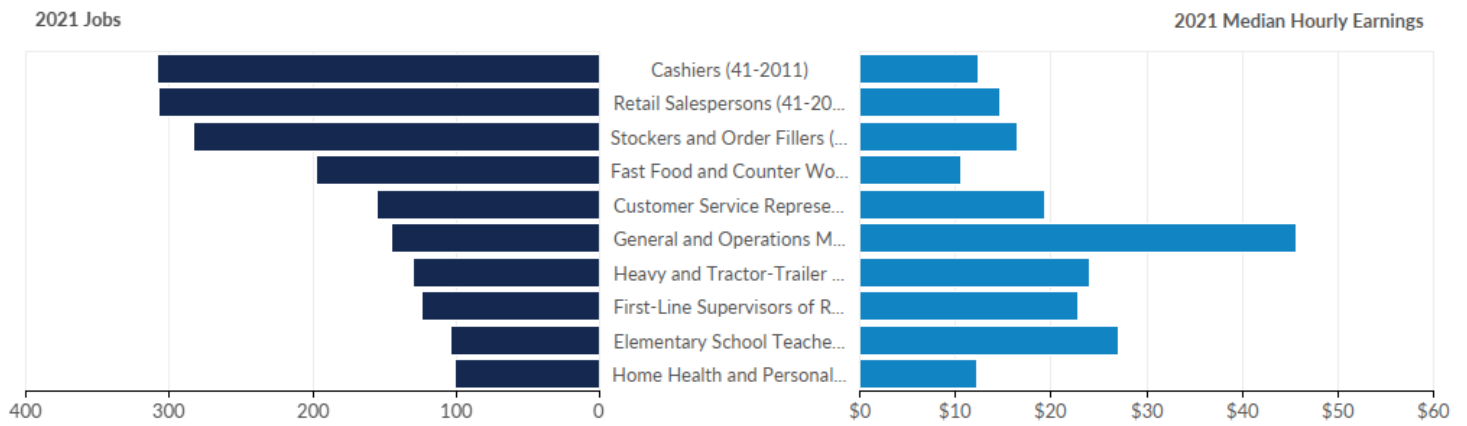
Regions:

Code	Description
77474	Sealy, TX (in Austin county)

Timeframe: 2021 - 2031

Datarun: 2022.4 - Employees

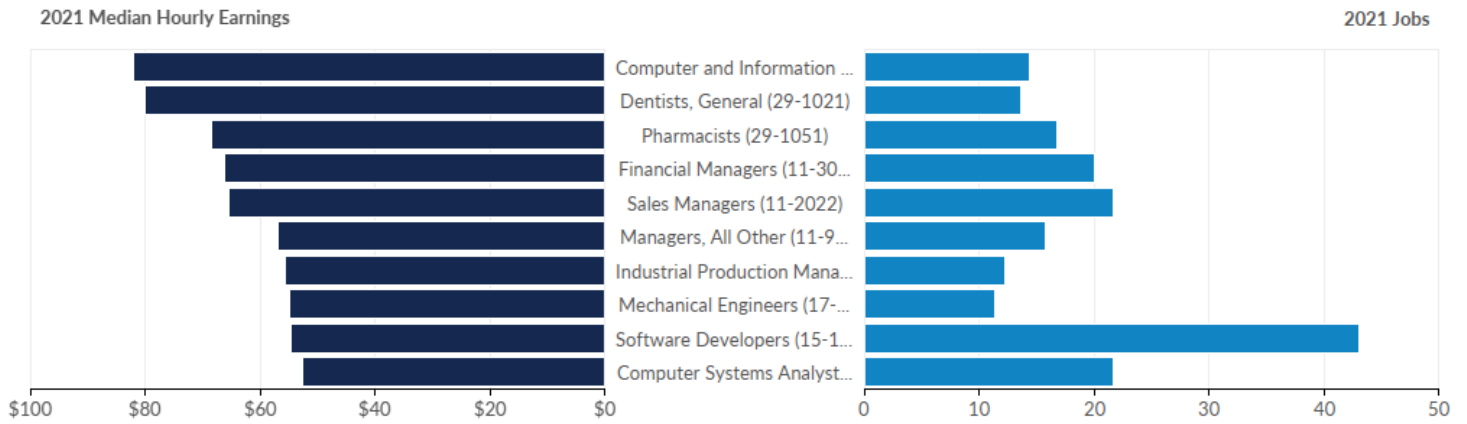
Largest Occupations



Occupation	2021 Jobs	2031 Jobs	Change in Jobs (2021-2031)	% Change	2021 Median Hourly Earnings
Cashiers	308	353	45	15%	\$12.40
Retail Salespersons	308	378	70	23%	\$14.71
Stockers and Order Fillers	283	364	81	29%	\$16.45
Fast Food and Counter Workers	197	236	39	20%	\$10.53
Customer Service Representatives	155	184	29	19%	\$19.36
General and Operations Managers	145	194	49	34%	\$45.70
Heavy and Tractor-Trailer Truck Drivers	130	150	20	15%	\$24.09
First-Line Supervisors of Retail Sales Workers	124	150	26	21%	\$22.84
Elementary School Teachers, Except Special Education	103	124	21	20%	\$27.01
Home Health and Personal Care Aides	101	157	56	55%	\$12.26
Office Clerks, General	97	113	16	16%	\$15.70
Janitors and Cleaners, Except Maids and Housekeeping Cleaners	97	136	39	40%	\$11.99
Laborers and Freight, Stock, and Material Movers, Hand	86	103	17	20%	\$15.97
Childcare Workers	86	138	52	60%	\$10.94
Secondary School Teachers, Except Special and Career/Technical Education	74	91	17	23%	\$27.01

First-Line Supervisors of Office and Administrative Support Workers	73	85	12	16%	\$31.42
Secretaries and Administrative Assistants, Except Legal, Medical, and Executive	70	78	8	11%	\$16.12
Teaching Assistants, Except Postsecondary	67	87	20	30%	\$10.06
Waiters and Waitresses	63	115	52	83%	\$9.13
First-Line Supervisors of Food Preparation and Serving Workers	63	83	20	32%	\$13.36

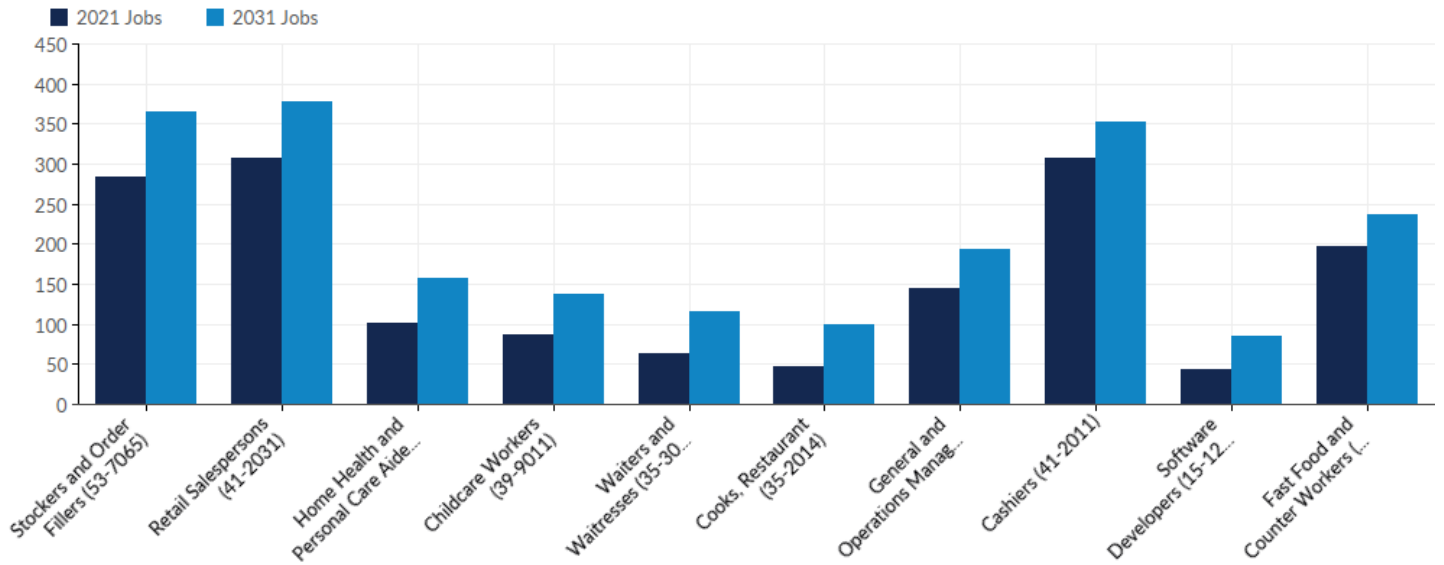
Highest Paying Occupations



Occupation	2021 Jobs	2031 Jobs	Change in Jobs (2021-2031)	% Change	2021 Median Hourly Earnings
Computer and Information Systems Managers	14	23	9	64%	\$82.21
Dentists, General	14	19	5	36%	\$80.02
Pharmacists	17	20	3	18%	\$68.53
Financial Managers	20	29	9	45%	\$66.13
Sales Managers	22	30	8	36%	\$65.44
Managers, All Other	16	22	6	38%	\$56.82
Industrial Production Managers	12	18	6	50%	\$55.56
Mechanical Engineers	11	18	7	64%	\$55.03
Software Developers	43	84	41	95%	\$54.71
Computer Systems Analysts	22	33	11	50%	\$52.52
Industrial Engineers	16	29	13	81%	\$46.87
General and Operations Managers	145	194	49	34%	\$45.70
Project Management Specialists	35	47	12	34%	\$44.84
Sales Representatives, Wholesale and Manufacturing, Technical and Scientific Products	13	21	8	62%	\$44.18
Computer Occupations, All Other	11	17	6	55%	\$42.87
Construction Managers	12	13	1	8%	\$42.83

Education Administrators, Kindergarten through Secondary	23	28	5	22%	\$41.05
Network and Computer Systems Administrators	10	15	5	50%	\$40.89
Management Analysts	12	19	7	58%	\$39.97
Dental Hygienists	11	17	6	55%	\$37.05

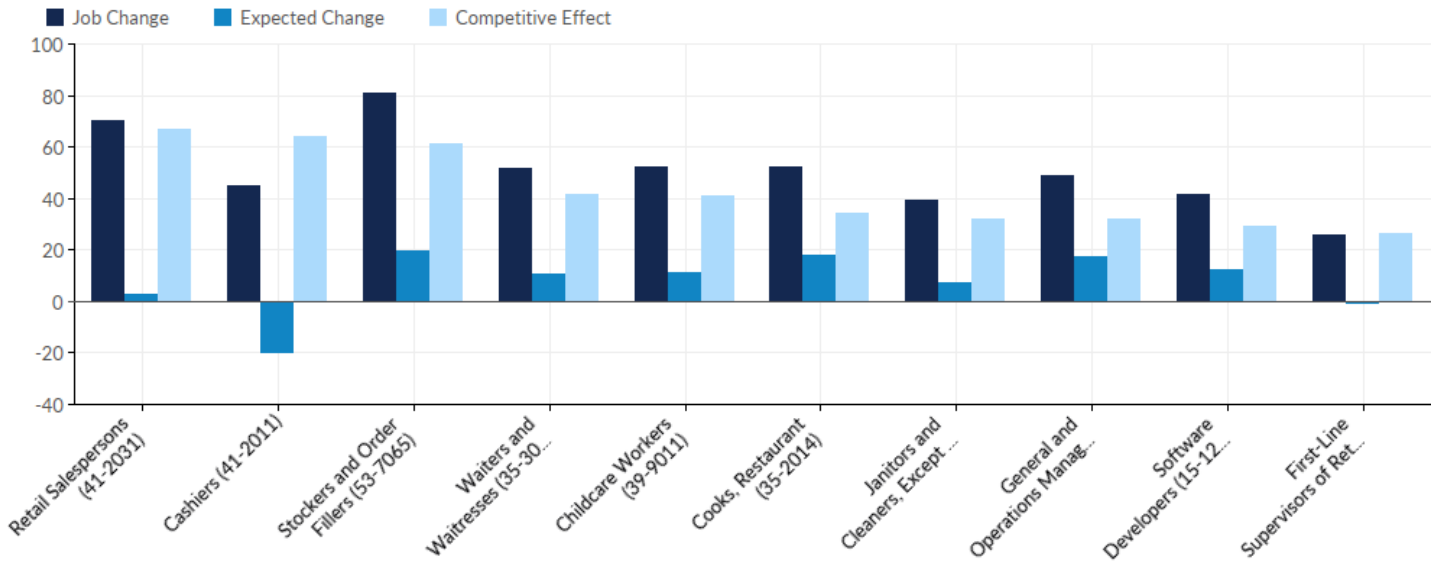
Fastest Growing Occupations



Occupation	2021 Jobs	2031 Jobs	Change in Jobs (2021-2031)	% Change	2021 Median Hourly Earnings
Stockers and Order Fillers	283	364	81	29%	\$16.45
Retail Salespersons	308	378	70	23%	\$14.71
Home Health and Personal Care Aides	101	157	56	55%	\$12.26
Childcare Workers	86	138	52	60%	\$10.94
Waiters and Waitresses	63	115	52	83%	\$9.13
Cooks, Restaurant	47	99	52	111%	\$12.38
General and Operations Managers	145	194	49	34%	\$45.70
Cashiers	308	353	45	15%	\$12.40
Software Developers	43	84	41	95%	\$54.71
Fast Food and Counter Workers	197	236	39	20%	\$10.53
Janitors and Cleaners, Except Maids and Housekeeping Cleaners	97	136	39	40%	\$11.99
Preschool Teachers, Except Special Education	44	74	30	68%	\$12.41
Customer Service Representatives	155	184	29	19%	\$19.36
Maids and Housekeeping Cleaners	60	86	26	43%	\$12.56
First-Line Supervisors of Retail Sales Workers	124	150	26	21%	\$22.84

Electrical, Electronic, and Electromechanical Assemblers, Except Coil Winders, Tapers, and Finishers	21	43	22	105%	\$19.74
Sales Representatives of Services, Except Advertising, Insurance, Financial Services, and Travel	39	60	21	54%	\$29.27
Elementary School Teachers, Except Special Education	103	124	21	20%	\$27.01
Teaching Assistants, Except Postsecondary	67	87	20	30%	\$10.06
First-Line Supervisors of Food Preparation and Serving Workers	63	83	20	32%	\$13.36

Highest Performing Occupations



Occupation	Job Change	Occ Mix Effect	Nat Growth Effect	Expected Change	Competitive Effect	2021 Median Hourly Earnings
Retail Salespersons	70	-27	30	3	67	\$14.71
Cashiers	45	-50	30	-20	64	\$12.40
Stockers and Order Fillers	81	-8	28	20	61	\$16.45
Waiters and Waitresses	52	4	6	10	41	\$9.13
Childcare Workers	52	3	8	11	41	\$10.94
Cooks, Restaurant	52	14	5	19	34	\$12.38
Janitors and Cleaners, Except Maids and Housekeeping Cleaners	39	-2	9	7	32	\$11.99
General and Operations Managers	49	3	14	17	32	\$45.70
Software Developers	41	8	4	12	29	\$54.71
First-Line Supervisors of Retail Sales Workers	26	-13	12	-1	26	\$22.84
Customer Service Representatives	29	-12	15	3	25	\$19.36
Home Health and Personal Care Aides	56	24	10	34	22	\$12.26

Preschool Teachers, Except Special Education	30	4	4	8	22	\$12.41
Electrical, Electronic, and Electromechanical Assemblers, Except Coil Winders, Tapers, and Finishers	22	0	2	2	20	\$19.74
Maids and Housekeeping Cleaners	26	1	6	7	19	\$12.56
Sales Representatives of Services, Except Advertising, Insurance, Financial Services, and Travel	21	0	4	4	17	\$29.27
Sales Representatives, Wholesale and Manufacturing, Except Technical and Scientific Products	20	-2	5	3	17	\$30.75
Office Clerks, General	16	-8	9	1	14	\$15.70
Teaching Assistants, Except Postsecondary	20	0	7	7	13	\$10.06
First-Line Supervisors of Production and Operating Workers	17	-1	4	3	13	\$32.69

Appendix A - Data Sources and Calculations

Occupation Data

Emsi occupation employment data are based on final Emsi industry data and final Emsi staffing patterns. Wage estimates are based on Occupational Employment Statistics (QCEW and Non-QCEW Employees classes of worker) and the American Community Survey (Self-Employed and Extended Proprietors). Occupational wage estimates are also affected by county-level Emsi earnings by industry.

ZIP Code Data Disclaimer

Due to a lack of source data at the ZIP code level, Lightcast's ZIP-level estimates can be less accurate when looking at a small number of ZIP codes. This is especially likely to occur in rural areas.

State Data Sources

This report uses state data from the following agencies: Texas Workforce Commission